



# SCENIC HELICOPTER FLIGHTS 2026

PURNULULU NATIONAL PARK | WARMUN | BUNGL BUNGL CARAVAN PARK |  
KATHERINE | EL QUESTRO | KUNUNURRA | MITCHELL FALLS



BUNGL BUNGL RANGE, PURNULULU NATIONAL PARK



- Operating since 1984
- Fleet of over 25 helicopters
- Ecotourism accredited for over 20 years
- National tourism quality accredited
- Head office based in Kununurra



HeliSpirit acknowledges the Traditional Custodians of the lands where we live, work, and welcome visitors, including the Miriwung Gajerrong people on whose Country we are based. We pay our respects to Elders, past and present, and recognise their enduring connection to the land, waters, and community.

KING RIVER

# ABOUT HELISPIRIT

At HeliSpirit, we're committed to delivering reliable, professional helicopter services across a diverse range of industries. Since our founding in 1984, we've led the way in tourism, pioneering scenic helicopter flights over the iconic Bungle Bungle Range.

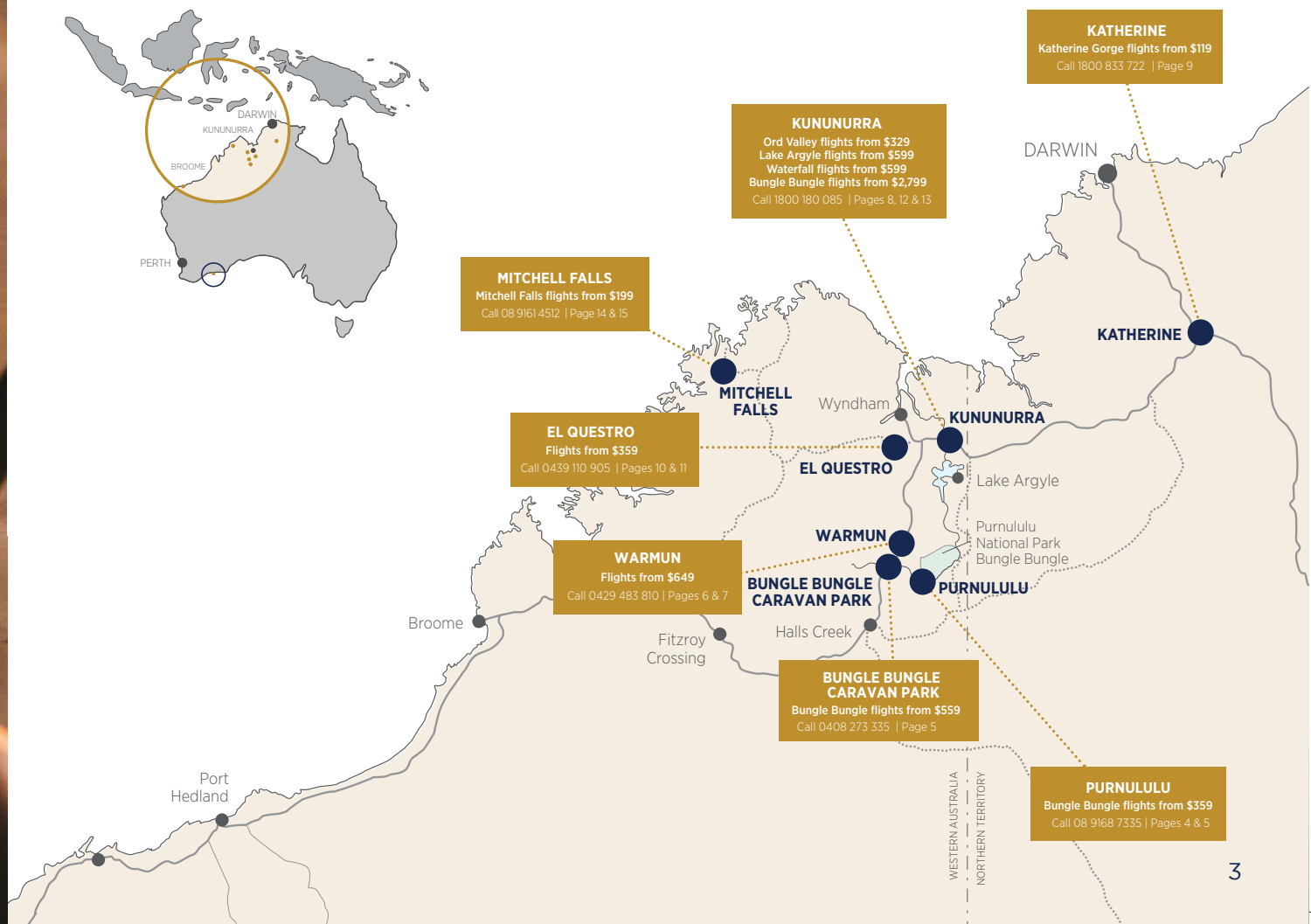
Our head office is based in Kununurra/Goonoonoorang, a vibrant town of around 5,000 residents located at the heart of Miriwoong Country. Every year, we're privileged to fly tens of thousands of tourists across the region, with peak season running from April to October.

With a range of tourism experiences, we're proud to showcase the spectacular beauty of Australia's north-west from our bases across the Kimberley and Northern Territory.

We operate a fleet of twenty-five helicopters stationed at key locations, including Purnululu National Park (Bungle Bungle), Warmun, Bungle Bungle Caravan Park, El Questro, Katherine, Kununurra and Mitchell Falls.

As a locally owned, multi-award-winning company, HeliSpirit is the specialist in exploring Australia's north by helicopter. We hold National Tourism Quality Accreditation and, in 2022, we were inducted into the Ecotourism Hall of Fame for maintaining eco-accreditation for over 20 years.

**Give our friendly team a call to chat about the region and find the perfect flight for you.**





📍 BUNGLE BUNGLE RANGE

## ABOUT PURNULULU NATIONAL PARK THE BUNGLE BUNGLE

Purnululu National Park, a UNESCO World Heritage site, is the first national park in the Kimberley to be jointly managed by the Gija and Jaru Traditional Owners alongside the Parks and Wildlife Service. This joint management system honours the Traditional Owners' responsibility for the care of the land and the well-being of visitors.

As a licensed tour operator within Purnululu, HeliSpirit is committed to upholding and enhancing sustainability principles in the park to ensure that future generations can enjoy this unique landscape.

Our operations are designed to enrich visitor experiences while preserving the park's values. Our recognition as a Green Travel leader, with Eco Certification since 2002, reflects our dedication to sustainable tourism.

Together with our passengers, HeliSpirit contributes financially to the management of Purnululu; a portion of each tour price goes directly to the Parks and Wildlife Service to support the preservation of this natural area and improve visitor facilities.





# FROM PURNULULU NATIONAL PARK

**BOOKINGS** 08 9168 7335  
 bungles@helispirit.com.au

Office and helipad located at Bellburn Airstrip, Purnululu National Park.  
 Seasonal base open from April to September.

## A18 | BUNGLE BUNGLE DOMES SPECIAL

**FLIGHT TIME:** 18 MINUTES  
**COST:** \$359 PP

The perfect option for a snapshot of the stunning Bungle Bungle Range. Soar over the mouth of the spectacular Piccaninny Gorge to witness the dramatic Cathedral Gorge and iconic black and orange striped Bungle Bungle domes.

## A30 | BUNGLE BUNGLE DOMES & RED ROCK GORGES FLIGHT

**FLIGHT TIME:** 30 MINUTES  
**COST:** \$559 PP

This flight is brimming with more impressive natural features and spectacular landforms than you could imagine. View the remarkable hidden red rock gorges of the north west tip, Horseshoe Valley, Piccaninny Gorge, Cathedral Gorge and the show-stopping striped Bungle Bungle domes that have contributed to the listing of Purnululu National Park as one of Australia's World heritage areas.

## A42 | THE ULTIMATE BUNGLE BUNGLE FLIGHT

**FLIGHT TIME:** 42 MINUTES  
**COST:** \$649 PP

Depart Bellburn Airstrip and head towards the southern tip of the Bungle Bungle Range to view Deep Gorge and "The Twins". Continue to the highest point of the Bungle Bungle Range and view the spectacular red rock gorges of the north-west end of the park.

View the eastern side of the range and encounter incredible eroded sandstone formations and a maze of gorges, soaring over the Valley of the Giants. Fly along the southern face to the mouth of Piccaninny Gorge and then follow Piccaninny Creek to view and photograph the mouth of Cathedral Gorge and the famous orange and black striped beehive-shaped domes.

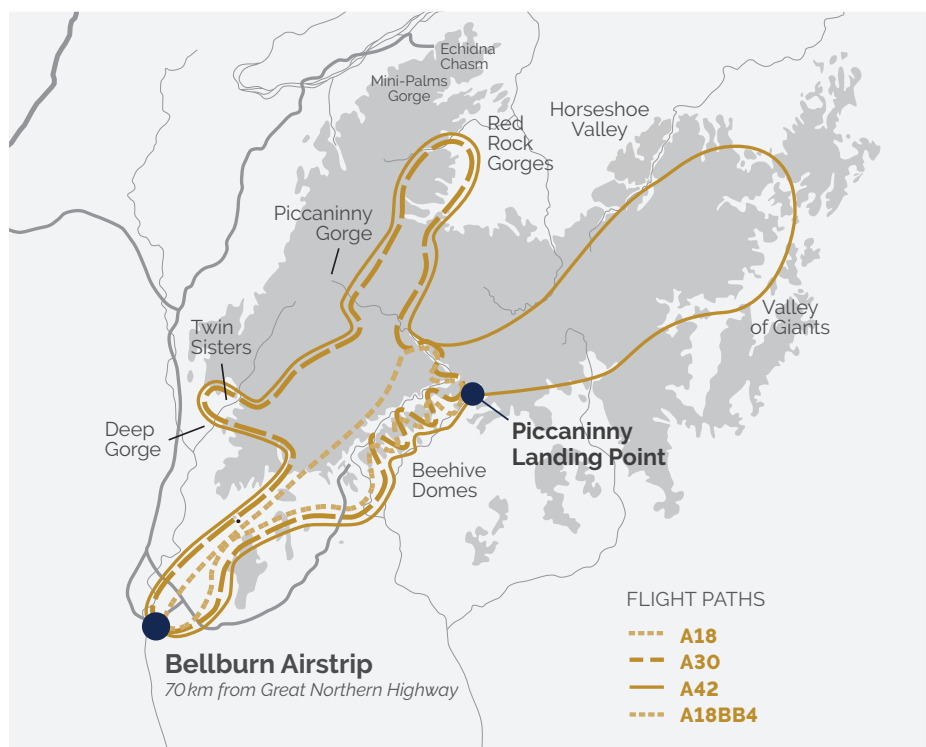
## A18BB4 | BUNGLE BUNGLE DOMES SPECIAL + PICCANINNY GORGE HELI HIKE

**DEPARTS:** 7AM  
**AVAILABLE:** MAY TO AUGUST  
**FLIGHT TIME:** 18 MINUTES  
**TOUR DURATION:** 8 HOURS 30 MINUTES  
**COST:** \$1,235 PP

Fly over the south-west end of the Bungle Bungle Range to "Y" Gorge before soaring across the top of the massif to the mouth of the spectacular Piccaninny Gorge.

Continue along the southern face of the range, following Piccaninny Creek, where you can view the mouth of Cathedral Gorge and soar over the famous orange and black striped sandstone beehive-shaped domes. Land near the mouth of Piccaninny Gorge — this enormous gorge spreads into five fingers as it cuts through the Bungle Bungle Range. Your guide will lead the hike into the gorge and share stories of the area's significance to the Aboriginal people and its unique history, which led to the World Heritage listing of Purnululu National Park. The hike is up to 10km return. During April and August, there is little shade on the walk, and the temperatures can exceed 40°C.

**WALK RATING:** LEVEL 6 — HIGH LEVEL OF FITNESS REQUIRED.





## BUNGLE BUNGLE FLIGHTS



BUNGLE BUNGLE RANGE, PURNULULU NATIONAL PARK

# FROM BUNGLE BUNGLE CARAVAN PARK

**BOOKINGS** 0408 273 335  
bbcp@helispirit.com.au

Office and helipad located at the Bungle Bungle Caravan Park, 1km off the Great Northern Highway.

Best for 2WD and guests staying at the caravan park.

Seasonal base opens from May to September.



### BB30 | BUNGLE BUNGLE SCENIC

**FLIGHT TIME** 30 MINUTES | **COST** \$559 PP

Fly over Mabel Downs Cattle Station to Purnululu National Park where you will see the western wall, Deep Gorge and Piccaninny Gorge. Enjoy panoramic views of the iconic sandstone domes that define the Bungle Bungle Range.

### BB40 | BUNGLE BUNGLE & RED ROCK GORGES FLIGHT

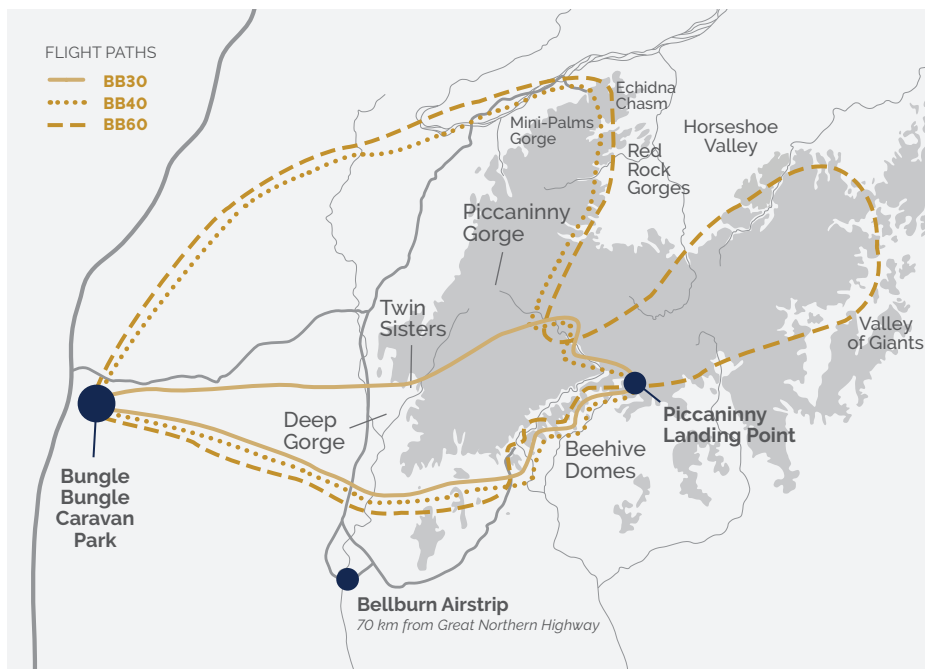
**FLIGHT TIME** 40 MINUTES | **COST** \$649 PP

Fly over Mabel Downs Cattle Station and the Ord River before entering Purnululu National Park where you will view the western wall. Here you will discover towering red rock gorges filled with Livistona Palms clinging to cliff faces. Next, fly past Horseshoe Valley, Piccaninny Gorge, Piccaninny Creek, the iconic striped Bungle Bungle domes, Deep Gorge and "Y" Gorge. All of these incredible sites have contributed to the listing of Purnululu National Park as one of Australia's World Heritage areas.

### BB60 | BUNGLE BUNGLE, RED ROCK GORGES & OSMAND RANGE FLIGHT

**FLIGHT TIME** 60 MINUTES  
**COST** \$999 PP

Fly over Mabel Downs Cattle Station and past the Ord River before heading north to discover the impressive Osmand Ranges, where endless waves of ancient rocks roll towards the east. Next, you will cross into Purnululu National Park to discover the red rock gorges at the northern end of the park, where Livistona Palms cling to towering gorges. Continue on to view Horseshoe Valley, Piccaninny Gorge and Piccaninny Creek, followed by the iconic striped Bungle Bungle domes — which have contributed to the listing of Purnululu National Park as a one of Australia's World Heritage areas. Finally, discover Deep Gorge and "Y" Gorge at the southern end of the park, before returning to the Bungle Bungle Caravan Park.





 BUNGLE BUNGLE RANGE

# FROM WARMUN

**BOOKINGS** 0429 483 810  
warmun@helispirit.com.au

Office and helipad located at Warmun Roadhouse on the Great Northern Highway. Seasonal base open from April to October.

## W45 | BUNGLE BUNGLE & OSMAND RANGE FLIGHT

**FLIGHT TIME:** 45 MINUTES  
**COST:** \$649 PP

This Bungle Bungle flight will take you over the Osmand Range, a spectacular range, filled with palms clinging to gorges and endless waves of ancient rocks rolling towards the east. Once you reach the Bungle Bungle Range, you will view red rock gorges of the Northern Madssif, Western Wall, Horseshoe Valley, Piccaninny Gorge, Piccaninny Creek with its ancient, banded sandstone domes, Deep Gorge and "Y" Gorge.

## W60 | BUNGLE BUNGLE EXPLORER

**FLIGHT TIME:** 60 MINUTES  
**COST:** \$999 PP

The Bungle Bungle Explorer flight takes you over the entire Purnululu National Park, showcasing incredible places that are only accessible by air. After crossing the Osmand Range, you will reach the Bungle Bungle Range and fly over red rock gorge, the Western Wall, Horseshoe Valley, Piccaninny Gorge, Piccaninny Creek, Deep Gorge, "Y" Gorge, the Valley of the Giants, and the north eastern tip.



# ENHANCE YOUR W45 EXPERIENCE

## + CATHEDRAL GORGE GUIDED WALK

### W45 BB1 | BUNGLE BUNGLE FLIGHT + CATHEDRAL GORGE

**AVAILABLE:** APRIL TO OCTOBER  
**DURATION:** 9:30AM TO 4:00PM (6:30AM TO 1:00PM IN SEPTEMBER)  
**FLIGHT TIME:** 45 MINUTES  
**COST:** ADULT \$1,659 PP | CHILD \$1,479 PP

Add a guided Cathedral Gorge walk to your scenic flight. Land at Bellburn Airstrip, meet your guides, and explore Purnululu National Park on foot. Lunch included.

## + CATHEDRAL GORGE & ECHIDNA CHASM GUIDED WALK

### W45 BB3 | BUNGLE BUNGLE FLIGHT + CATHEDRAL GORGE + ECHIDNA CHASM

**AVAILABLE:** APRIL TO OCTOBER  
**DURATION:** 6:30AM TO 4:00PM (6:30AM TO 1:00PM IN SEPTEMBER)  
**FLIGHT TIME:** 45 MINUTES  
**COST:** ADULT \$1,759 PP | CHILD \$1,529 PP

Explore both the northern and southern ends of Purnululu National Park. Add guided walks through Cathedral Gorge, the Domes and Echidna Chasm to your scenic helicopter flight. Land at Bellburn Airstrip, meet your guide, and discover the beauty of Purnululu National Park on foot. Lunch included.

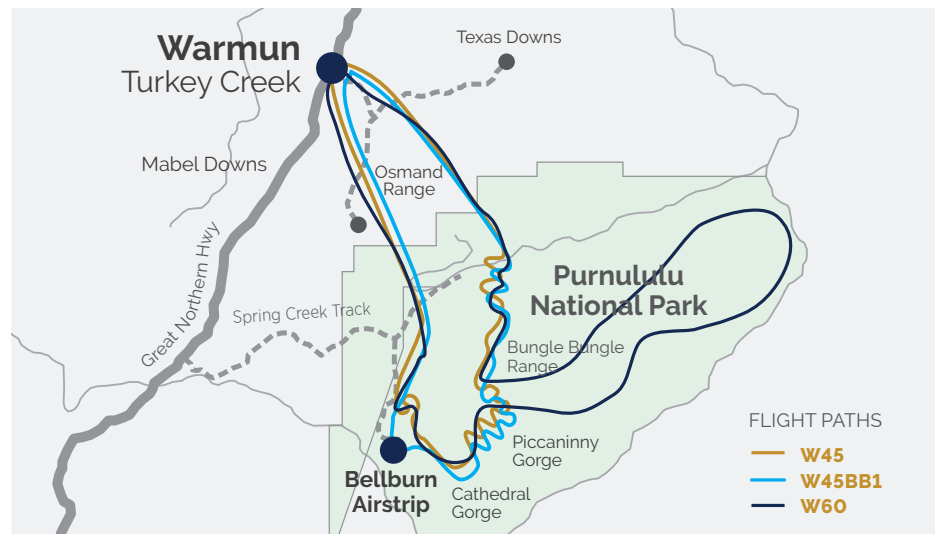
## W45 BB1 | + BUNGLE BUNGLE OVERNIGHT STAY

**AVAILABLE:** MAY TO SEPTEMBER  
**DURATION:** 9:30AM DAY 1 TO 10:20AM DAY 2  
**FLIGHT TIME:** 45 MINUTES  
**COST:** ADULT \$2,059 PP | CHILD \$1,769 PP

Extend your adventure with an overnight stay at the eco-accredited Bungle Bungle Savannah Lodge. Enjoy your private ensuite cabin, pool, outdoor fire and licensed bar. After breakfast, return to Warmun on a scenic helicopter flight.

## W45 BB3 | + BUNGLE BUNGLE OVERNIGHT STAY

**AVAILABLE:** MAY TO SEPTEMBER  
**DURATION:** 9:30AM DAY 1 TO 10:20AM DAY 2  
**FLIGHT TIME:** 45 MINUTES  
**COST:** ADULT \$2,159 PP | CHILD \$1,819 PP





## BUNGLE BUNGLE FLIGHTS



BUNGLE BUNGLE RANGE

# FROM KUNUNURRA | GOONNOONOORRANG

**BOOKINGS** 1800 180 085  
bookings@helispirit.com.au

Office located at the airport.

Base open all year round.

Tour availability varies.

## **KHBBS** | BUNGLE BUNGLE & SECRET SPRINGS FLIGHT + SWIM & PICNIC

**FLIGHT TIME:** 3 HOURS  
**TOUR DURATION:** 5 HOURS  
**COST:** \$2,799 PP

This incredible tour departs Kununurra, giving you sensational views of the Packsaddle Irrigation Area, Elephant Rock, Lake Argyle, and the Bungle Bungle Range. Take in the impressive landscape as you soar over the huge sandstone formations and the iconic black and orange striped Bungle Bungle Range that have contributed to the World Heritage listing of Purnululu National Park. Land at a remote airfield, Bellburn Airstrip, within the Purnululu National Park to stretch your legs. Continue to a remote waterhole nestled within the ranges where you will land, take a short hike into a waterhole and enjoy a refreshing swim in absolute privacy. Take in the most beautiful settings imaginable and enjoy a picnic. You will need a good level of mobility for the short hike to the waterhole. This tour is available all year round, but during the wet season, January to March, this flight offers spectacular views of surrounding waterfalls. Your pilot will choose which remote waterhole to land at based on the weather at the time.



CATHEDRAL GORGE

## **KHBB1** | BUNGLE BUNGLE FLIGHT + PRIVATE CATHEDRAL GORGE GUIDED WALK

**AVAILABLE:** JANUARY TO SEPTEMBER  
**DEPARTURE TIME:** 6:00AM  
**FLIGHT TIME:** 3 HOURS  
**TOUR DURATION:** 8 HOURS  
**COST:** \$3,349 PP

Discover the Bungle Bungle Range from a different perspective by adding on a Cathedral Gorge and Domes Guided Walk. This incredible tour departs Kununurra, giving you sensational views of the Packsaddle Irrigation Area, Elephant Rock, Lake Argyle, and the Bungle Bungle Range. Take in the impressive landscape as you soar over the huge sandstone formations and the iconic black and orange striped Bungle Bungle Range that have contributed to the World Heritage listing of Purnululu National Park. Land at a remote airfield, Bellburn Airstrip, within the Purnululu National Park where you will meet your guide in the shady area at the airstrip and be driven closer to the Bungle Bungle Range in an air-conditioned 4WD bus. Enjoy a Level 2 moderate-to-easy guided walk amongst the famous eroded towers and black and orange banded beehive structures on the Domes Walk. Your guide will take you into Cathedral Gorge, where towering cliffs open up to form a space with awe inspiring natural acoustics. Enjoy your lunch and walk along the sandy bed of Piccaninny Creek, which flows only in the monsoonal waterfall season. Return via a scenic helicopter flight to Kununurra.

From January to March the Purnululu National Park is **closed**. Whilst the park is closed your helicopter will land at Piccaninny Creek carpark where you will start your guided walk. You could be one of a handful of people who have entered the park during the wet season and get to see that the colours are brighter after the rain and the creeks are filled with water.

**This tour is not available between October to December.**

## **KHBBG0** | BUNGLE BUNGLE FLIGHT + PRIVATE CATHEDRAL GORGE & ECHIDNA CHASM GUIDED WALK + OVERNIGHT STAY

**AVAILABLE:** APRIL TO SEPTEMBER  
**FLIGHT TIME:** 3 HOURS  
**DURATION:** 6:00AM DAY 1 TO 9:00AM DAY 2  
**COST:** ADULT \$3,749 PP | CHILD \$3,639 PP

Enhance your visit to the Bungle Bungle Range with a guided Cathedral Gorge and Domes walk, followed by an unforgettable overnight stay at the eco-accredited Bungle Bungle Savannah Lodge. This incredible tour departs Kununurra, giving you sensational views of the Packsaddle Irrigation Area, Elephant Rock, Lake Argyle, and the Bungle Bungle Range. Take in the impressive landscape as you soar over the huge sandstone dome formations that have contributed to the World Heritage listing of Purnululu National Park. Land at Bellburn Airstrip and meet your guide. You will be driven closer to the Bungle Bungle Range in an airconditioned 4WD bus. Enjoy a Level 2 moderate-to-easy guided walk amongst the famous eroded towers and black and orange banded beehive structures on the Domes Walk. Your guide will take you into Cathedral Gorge, with incredible natural acoustics. Board the air-conditioned 4WD bus and continue to the northern gorges of Purnululu National Park which are quite different to Cathedral Gorge and the Domes at the south. After lunch your guide will take you northwards along the western wall of the Bungle Bungle Range where a rocky path will lead you into the amazing Echidna Chasm, which narrows at points to less than 2-metres in width. This walk is a Level 5 moderate-to-difficult walk that requires a high level of mobility. After your day of exploring, you will overnight at the Bungle Bungle Savannah Lodge in a private ensuite cabin. Enjoy sunset drinks from their lookout or take a refreshing swim in the pool and marvel in the serenity by the outdoor fire and licensed bar. Depart the Bungle Bungle in the morning after you have had breakfast and return to Kununurra via a scenic helicopter flight.

**SEE PAGE 12 FOR MORE FLIGHT OPTIONS DEPARTING FROM KUNUNURRA**



NITMILUK (KATHERINE GORGE)



WE PAY OUR RESPECTS TO THE JAWOYN, DAGOMAN AND WARDAMAN PEOPLES, THE TRADITIONAL CUSTODIANS OF THE LAND IN AND AROUND KATHERINE.

# FROM KATHERINE

**BOOKINGS** 1800 833 722  
 katherine.gorge@helispirit.com.au  
 Office and helipad located at the Maud Creek airfield on Gorge Road.  
 Seasonal base opens from March to November.

## KG8 | KATHERINE GORGE SPECIAL

**FLIGHT TIME:** 8 MINUTES  
**COST:** \$119 PP

This flight gives you a snapshot of the dramatic Katherine Gorge and takes you to the Northern Rockhole and over the mouth of the gorge.

## KG12 | KATHERINE GORGE, BUTTERFLY GORGE & LILY PONDS

**FLIGHT TIME:** 12 MINUTES  
**COST:** \$199 PP

Discover the beauty of Nitmiluk National Park with a unique bird's eye view. Fly halfway along the 12km stretch of the Katherine Gorge canyons, Butterfly Gorge and Lily Ponds.

## KG15 | KATHERINE GORGE HIGHLIGHTS

**FLIGHT TIME:** 15 MINUTES  
**COST:** \$239 PP

This flight offers marvellous views of the eight incredible gorges of Nitmiluk National Park. Fly over the sheer canyon walls of the escarpment area and enjoy panoramic views of the Top End's unique wild scenery.

## KG20 | THE FULL KATHERINE GORGE EXPERIENCE

**FLIGHT TIME:** 20 MINUTES  
**COST:** \$299 PP

This scenic flight encapsulates the magnificence of all 13 gorges in Nitmiluk National Park. Fly low over the Katherine River for a thrilling view of the Arnhem Land escarpment and surrounding scenery.

## KG30 | KATHERINE GORGE & 17 MILE VALLEY WATERFALLS

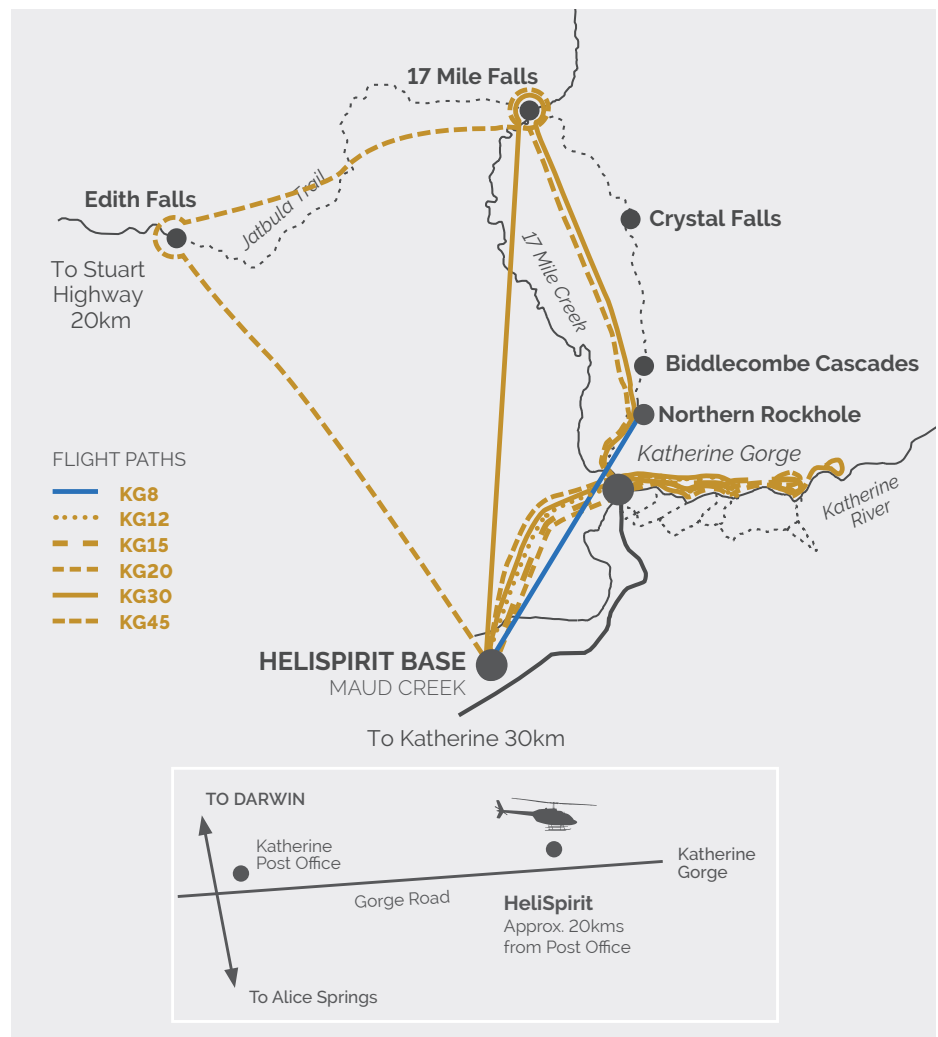
**FLIGHT TIME:** 30 MINUTES  
**COST:** \$459 PP

Experience the natural beauty of Katherine Gorge in Nitmiluk National Park before flying further along the escarpment towards Arnhem Land. Enjoy panoramic views of Northern Rockhole, Biddlecombe Cascades, Crystal Falls and 17 Mile Falls.

## KG45 | THE ULTIMATE KATHERINE GORGE & WATERFALLS EXPERIENCE

**FLIGHT TIME:** 45 MINUTES  
**COST:** \$699 PP

Experience the full diversity of Nitmiluk National Park. Discover spectacular waterfalls, including Edith Falls, Northern Rockhole and many others within the 17 Mile Valley plus thrilling and complete views of Katherine Gorge.





## EL QUESTRO STATION FLIGHTS

LOST CITY

# FROM EL QUESTRO

**BOOKINGS** 0439 110 905  
elquestro@helispirit.com.au

Office and helipad located at El Questro Station.

Seasonal base opens from April to Mid-October.

### EL1 | AMAROO FALLS HELI ADVENTURE

**FLIGHT TIME:** 30 MINUTES  
**TOUR DURATION:** 3 HOURS  
**COST:** \$799 PP

Only accessible by helicopter, this stunning wonderland features 15 cascading waterfalls, ranging from knee-high falls to falls as high as 45-metres. It also boasts several pristine swimming holes and some of the most breathtaking views that El Questro has to offer. Enjoy a gourmet picnic. This tour requires a good level of fitness for the hike to the falls.

### EL2 | MIRI MIRI FALLS HELI TOUR

**FLIGHT TIME:** 24 MINUTES  
**TOUR DURATION:** 2 HOURS  
**COST:** \$649 PP

Tucked away in a remote corner of El Questro, Miri Miri Falls features spring-fed water cascading over a 50-metre drop into a deep pool, surrounded by Livistona Palms and paperbark trees. Enjoy a refreshing swim in a pool surrounded by nature, followed by a gourmet picnic lunch.



COCKBURN RANGE

### EL6 | COCKBURN RANGE SUNSET FLIGHT

**FLIGHT TIME:** 30 MINUTES  
**TOUR DURATION:** 2 HOURS  
**COST:** \$699 PP

### + E6P | COCKBURN RANGE SUNSET + PICNIC

**FLIGHT TIME:** 30 MINUTES  
**TOUR DURATION:** 2 HOURS  
**COST:** \$749 PP

Experience a unique Kimberley sunset on this scenic helicopter flight along the Pentecost River. Land atop a plateaued peak and take in breathtaking views of El Questro and the stunning Cockburn Ranges.

+ Add a picnic to your tour and enjoy whilst taking in the incredible surrounds. The availability of these tours is subject to appropriate daylight conditions.

### EL7 | CHAMPAGNE SPRINGS ADVENTURE + BREAKFAST

**FLIGHT TIME:** 24 MINUTES  
**TOUR DURATION:** 2 HOURS  
**COST:** \$599 PP

Experience the serenity of Champagne Springs on this unique helicopter adventure. Land at a spring-fed waterhole and enjoy a refreshing swim as you dive into the cool cascading waters. Marvel at the colours of the ridge whilst enjoying a Champagne continental breakfast. Take in the lush scenery, cascading waterfalls, and sounds of nature before flying over the Pentecost River and Chamberlain Gorge on your return flight back to El Questro Station.

### EL7PU/DO | CHAMPAGNE SPRINGS ONE-WAY TRANSFER

**FLIGHT TIME:** 24 MINUTES  
**COST:** \$449 PP

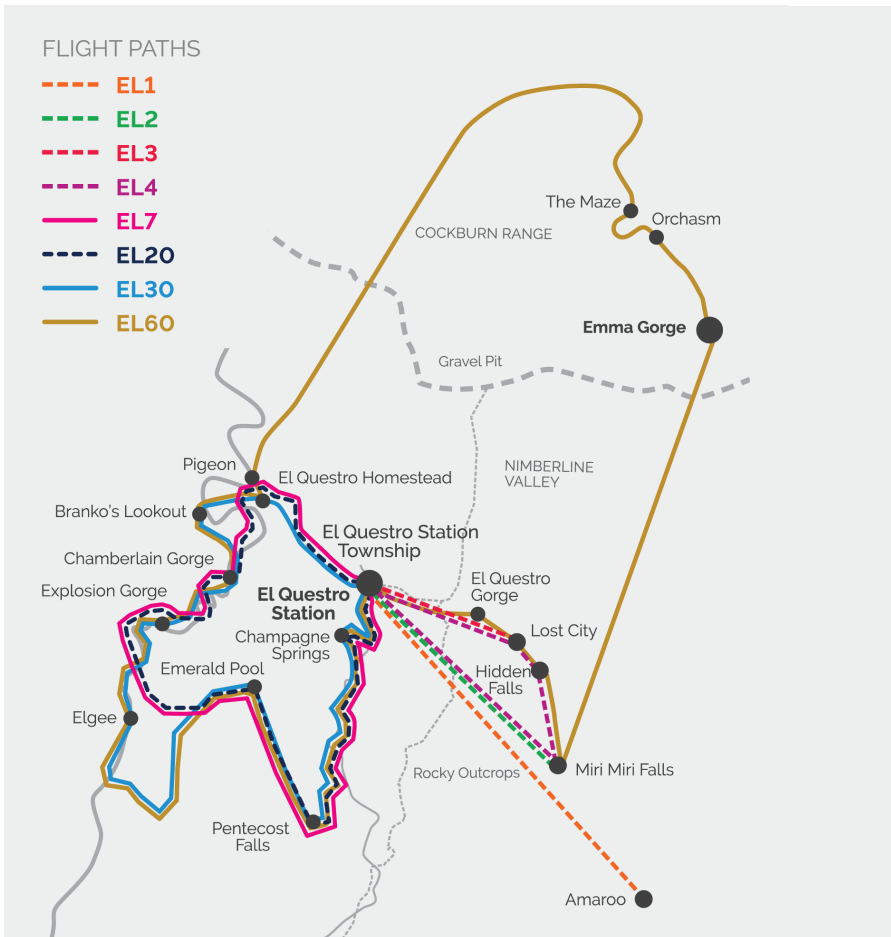


MIRI MIRI

## EL QUESTRO STATION FLIGHTS



WE ACKNOWLEDGE THE NGARINYIN PEOPLE, THE TRADITIONAL CUSTODIANS OF THE COUNTRY ON WHICH WE OPERATE. WE PAY OUR RESPECTS TO THEIR ELDERS, PAST PRESENT AND EMERGING.



## SCENIC HELICOPTER FLIGHT

CHOOSE FROM A 20, 30 OR 60 MINUTE SCENIC HELICOPTER FLIGHT OVER THE GRAND LANDSCAPE OF EL QUESTRO.

### EL20 | EL QUESTRO SNAPSHOT

**FLIGHT TIME:** 20 MINUTES  
**COST:** \$359 PP

Fly over the Pentecost River, Champagne Springs, Pentecost Falls, Emerald Pools, and Explosion Gorge for an inspiring taste of the region's most iconic landscapes.

### EL30 | EL QUESTRO HIGHLIGHTS

**FLIGHT TIME:** 30 MINUTES  
**COST:** \$559 PP

Discover the rugged beauty of El Questro from above. Soar over the Pentecost and Chamberlain Rivers, Elgee Ridge, and Chamberlain Gorge, with views of sparkling waterfalls and dramatic gorges throughout.

### EL60 | EL QUESTRO EXPLORER

**FLIGHT TIME:** 60 MINUTES  
**COST:** \$999 PP

Take in the full scale of the East Kimberley. Fly beyond El Questro over the Cockburn Range, 'The Maze,' and Cambridge Gulf, with sweeping views of Emma Gorge and distant rivers.

## KUNUNURRA SCENIC FLIGHTS



ORD RIVER, KUNUNURRA

# FROM KUNUNURRA | GOONNOONORRANG

**BOOKINGS** 1800 180 085  
bookings@helispirit.com.au  
Office located at the airport.  
Base open all year round.

### KH18 | KUNUNURRA SNAPSHOT

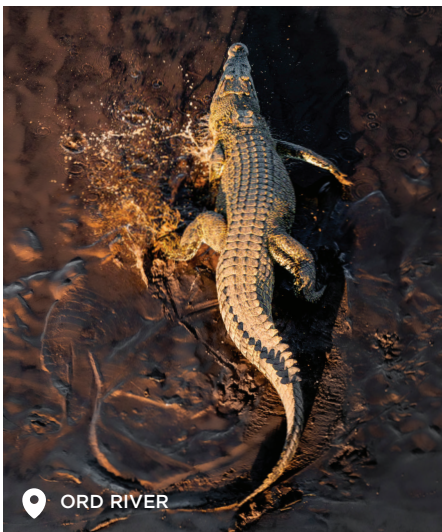
**FLIGHT TIME:** 18 MINUTES  
**COST:** \$329 PP

Discover Ord River, Diversion Dam, Ivanhoe Crossing, Mirima National Park, also known as the mini Bungle Bungle, and Lily Lagoon wetlands from above for breathtaking views of the Kimberley's stunning landscapes.

### KH30C | CROC SPOTTING HELICOPTER FLIGHT

**FLIGHT TIME:** 30 MINUTES  
**COST:** \$439 PP

Fly over the Lower Ord River to spot sunbathing saltwater crocodiles along the banks. Enjoy unique aerial views of Diversion Dam, Ivanhoe Crossing, and the Ord Irrigation Area as the morning light warms the land. We recommend flying anytime between 6:00am and 9:00am.



ORD RIVER

### KH45 | ORD RIVER VALLEY & LAKE ARGYLE FLIGHT

**FLIGHT TIME:** 45 MINUTES  
**COST:** \$599 PP

Soar over the Ord River, passing Elephant Rock, Carlton Gorge, and Packsaddle Plains, then trace the river to Lake Argyle for views of the dam wall, resort, and stunning lake reflections. Fly over farmlands, majestic ranges, and breathtaking gorges.

### KH45W | WATERFALL SCENIC FLIGHT

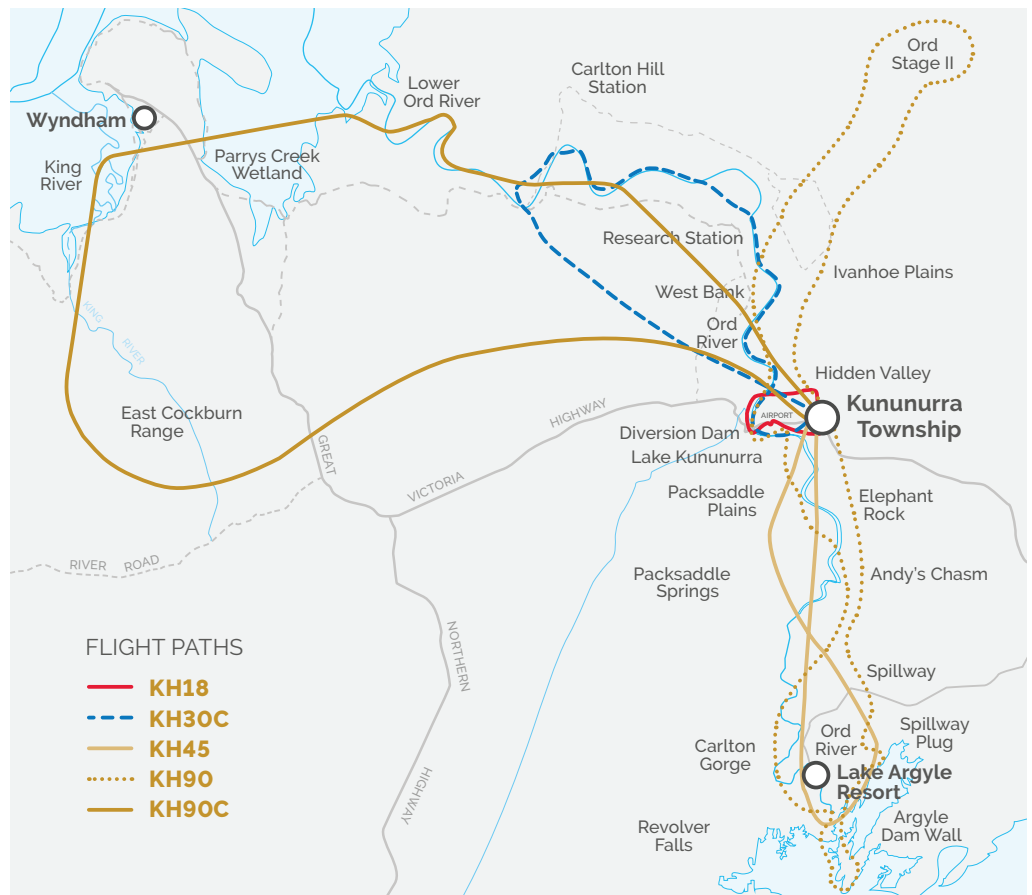
**FLIGHT TIME:** 45 MINUTES  
**COST:** \$599 PP

### KH45WS | WATERFALL SCENIC FLIGHT + SWIM

**FLIGHT TIME:** 45 MINUTES  
**TOUR DURATION:** 2 HOURS  
**COST:** \$699 PP

There is no set flight path for this spectacular scenic flight, it will depend on which waterfalls are at their best on the day. Our experienced pilots will give you exciting views of the mountain ranges surrounding Kununurra, the Ord River, the surrounding tracts of irrigated farmlands and the Kununurra Township.

+ Add to this incredible flight by landing at a remote waterhole for a refreshing swim and BYO picnic. Please wear walking shoes for this tour.





  
 GOONONDOORRANG (KUNUNURRA) IS LOCATED ON MERTWOONG COUNTRY. WE PAY OUR RESPECTS TO THE MERTWUONG GATJERRONG PEOPLES AS THE TRADITIONAL OWNERS OF THE LAND WHERE WE LIVE, WORK AND FLY.

**KH60R | REVOLVER FALLS ADVENTURE + SWIM**

**AVAILABLE:** AFTER MONSOONAL RAIN  
**FLIGHT TIME:** 60 MINUTES  
**TOUR DURATION:** 2 HOURS  
**COST:** \$799 PP

Discover stunning views of Kununurra, the Ord River, farmland and ranges surrounding this spectacular region before flying over Revolver Falls. Your flight path on the day will take you up the Ord River to Lake Argyle, before sweeping over the Northern edge of the Lake to find Revolver Falls, one of the tallest single drop waterfalls in Western Australia. After flying over Revolver Falls, your pilot will take you to remote waterhole to enjoy a refreshing swim and a BYO picnic.

**KH90 | DISCOVER THE ORD IRRIGATION SCHEME**

**FLIGHT TIME:** 1 HOUR 30 MINUTES  
**COST:** \$1,199 PP

This helicopter flight showcases breathtaking sights, including Ord Stage I and II, Spillway Creek, Carlton Gorge, Packsaddle Plains, Kununurra township, Mirima National Park, also known as the mini Bungle Bungle, and Lake Argyle. Fly over farmlands, the Ord Hydro Power Station, and the expansive Lake Argyle before returning to Kununurra.

**KH90C | CAPTURE THE COCKBURN RANGE & KING RIVER**

**FLIGHT TIME:** 1 HOUR 30 MINUTES  
**COST:** \$1,199 PP

Experience the colours of the Cockburn Range and the mesmerising tidal patterns of King River on this exciting helicopter adventure. Begin your scenic journey flying low over the Lower Ord River keeping an eye out for crocodiles! Track towards Wyndham, past iconic landscapes made famous by the Baz Luhrmann film 'Australia' and take in the natural aerial art of the tidal river systems below. Continue towards the Cockburn Range and depending on the time of day, be amazed at the vivid colours of the East Kimberley afternoon sun that wash over the rugged terrain. Follow the magnificent range, view Emma Gorge and Dunham River before returning to Kununurra.

**KHPUB | THE ULTIMATE KIMBERLEY HELI PUB EXPERIENCE**

**DEPARTS:** 9AM | **RETURNS:** 4:15PM  
**AVAILABLE:** MAY TO SEPTEMBER (MONDAY TO SATURDAY)  
**FLIGHT TIME:** 1 HOUR 30 MINUTES  
**TOUR DURATION:** 7 HOURS 15 MINUTES  
**COST:** \$1,599 PP

Your adventure departs Kununurra where you will fly over the vast farmlands surrounding the Kununurra Township before tracking towards Lake Argyle. Be in awe of the great expanse of Lake Argyle and the surrounding Carr Boyd Range. Land at Lake Argyle Resort where you will enjoy the stunning views with a snack and a beverage. You can even go for a refreshing swim in the famous infinity pool. Depart Lake Argyle and fly alongside the breathtaking Cockburn Range before landing at El Questro Station for lunch, a drink and some downtime at The Swinging Arm Bar. After lunch your tour will continue to the Hoochery Distillery, Western Australia's oldest continuously operating (legal) still. Here you will enjoy a rum tour, rum tasting and snack paddle before returning to Kununurra as the sun makes its way to the horizon, lighting up the spectacular Ord River.



 KING RIVER



 REVOLVER FALLS

NEW TOUR!



# BALMARNU CULTURAL TOUR FROM KUNUNURRA | GOONONOORRANG



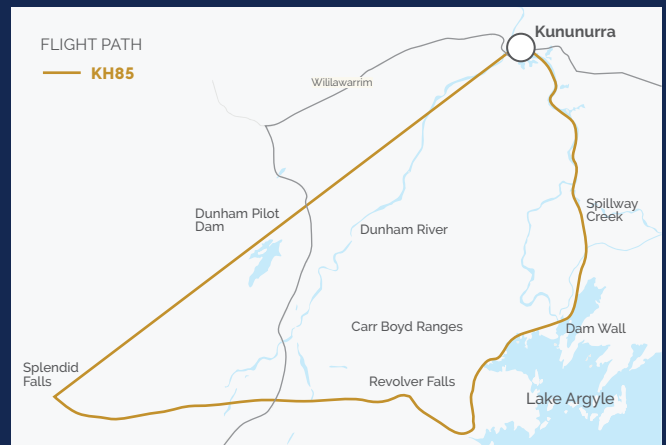
## KH85 | BALMARNU CULTURAL WATERFALL SWIM + PICNIC

**FLIGHT DURATION:** 1 HOUR 25 MINUTES  
**TOUR DURATION:** 3 HOURS  
**COST:** \$1,995 PER PERSON (MINIMUM 2 PAX)  
**DEPARTURE FROM:** KUNUNURRA AIRPORT (HELISPIRIT OFFICE)

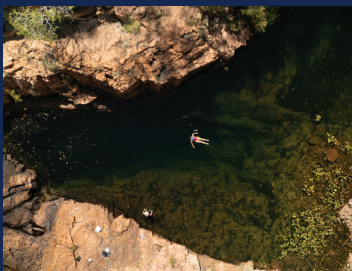
Experience the Kimberley like never before with our exclusive 3-hour Indigenous-guided flight departing Kununurra. Hosted by local Kitja man and traditional owner, Anthony Martin, this adventure offers an immersive journey where stunning landscapes and Indigenous culture come together in harmony. As your guide, Anthony shares his connection to the land, revealing Indigenous stories, history, and cultural insights at every turn.

Soar above the stunning waterfalls and rugged gorges that define the Kimberley's natural beauty before landing at a remote waterhole and having the option to take a refreshing swim or simply relax and take in the scenery. Enjoy a bush tucker-inspired meal crafted with local ingredients, cooked by Anthony on the fire.

This private tour offers an intimate, respectful, and culturally enriching experience that celebrates the land, its stories, and its people.



**Anthony Martin** is a proud Kitja Bunuba man and traditional owner with deep roots in the Kimberley region. Born in Wyndham and having lived in Kununurra for most of the past 25 years, Anthony has a strong connection to his country and community. His love for the Kimberley's rich history, culture, and natural beauty is at the heart of everything he does. Anthony's diverse life journey includes competing at the highest level as an Olympian, representing Australia in weightlifting at the Sydney 2000 Olympics, as well as numerous World Championships. Beyond his athletic achievements, he sits on several not-for-profit committees in Kununurra, actively contributing to the growth and wellbeing of his community. A passionate advocate for his land and culture, Anthony loves to share the Kimberley's stunning landscapes, stories, and history. His favourite way to showcase the region's beauty is from the air, flying guests over its spectacular waterfalls, rugged gorges, and pristine waterholes in a helicopter. Anthony's warmth, knowledge, and love for his country make every experience truly unforgettable.





**PUNAMII-UUNPUU (MITCHELL FALLS)**

# FROM MITCHELL FALLS | PUNAMII-UUNPUU

**BOOKINGS** 08 9161 4512  
 mitchell.falls@helispirit.com.au  
 Office located at Mitchell Falls Campground.  
 Bookings are essential. Check-in at our office prior to doing the walk to Mitchell Falls.

## MF6 | MITCHELL FALLS ONE-WAY TRANSFER

**FLIGHT TIME:** 6 MINUTES | **COST:** \$199 PP  
 Depart from the Mitchell Falls Campground and enjoy a scenic helicopter flight to Mitchell Falls, taking in breathtaking aerial views of Mitchell Falls and Mertens Gorge. From there, you can explore the area on foot as you walk back to the campground. Alternatively, you can choose to hike from the Mitchell Falls Campground to Mitchell Falls. At the end of your walk, a helicopter will meet you at the falls and fly you back to the campground on a spectacular return journey over Mitchell Falls and Mertens Gorge, offering unforgettable views of the landscapes you've just explored.

## MF18 | MITCHELL FALLS TRIPLE WATERFALLS

**FLIGHT TIME:** 18 MINUTES  
**COST:** \$349 PP / 4 PPL | \$399 PP / 3 PPL | \$499 PP / 2 PPL  
 Depart the Mitchell Falls Campground and fly downstream along the Mitchell River where the freshwater meets the saltwater. Orbit the lower Mitchell Falls before heading back via the Western Gorge and JCR Falls. Soar up the river to the spectacular Mitchell Falls and Mertens Gorge. Land at the Mitchell Falls where the helicopter will drop you off so you can explore the area on ground. This flight can also be done in reverse and depart from Mitchell Falls to Mitchell Falls Campground. Check in at our Mitchell Falls office prior to the walk to Mitchell Falls.

## MF48 | MITCHELL FALLS COASTAL EXPERIENCE

**FLIGHT TIME:** 48 MINUTES  
**COST:** \$699 PP / 4 PPL | \$799 PP / 3 PPL | \$1,049 PP / 2 PPL  
 Depart the Mitchell Falls Campground and discover the beauty of the north Kimberley coastline. Soar over the Mitchell Plateau to the turquoise-coloured waters of the Admiralty Gulf before following the coastline from Walsh Point to Crystal Head. Take in the stunning views of this untouched landscape as you fly over Crystal Creek to Walmsley Bay before making your way upstream to the majestic three-tiered Mitchell Falls and Mertens Gorge. Land at the Mitchell Falls where the helicopter will drop you off so you can explore the area on ground. This flight can also be done in reverse and depart from Mitchell Falls to Mitchell Falls Campground. Check in at our Mitchell Falls office prior to the walk to Mitchell Falls.



**LAWLEY RIVER, ADMIRALTY GULF**

## NORTH AND WEST KIMBERLEY FLIGHTS



LAKE ARGYLE

### CUSTOMISE YOUR OWN TOUR

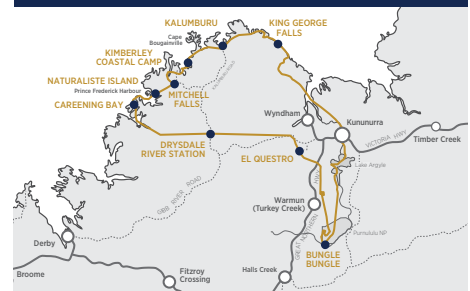
Haven't quite found what you are looking for? We also offer customised helicopter flights and tour packages. Contact us for ideas and inspiration.

## LUXURY HELICOPTER SAFARIS

The ultimate way to explore the Kimberley is by private helicopter with an experienced local pilot/guide. Stay in the region's finest remote lodges and coastal wilderness retreats, where the dining is fresh and exquisite, and the service is friendly and welcoming.

HeliSpirit's Outback HeliSafaris operate from April through to September and do not have set departure dates. Our exclusive safaris are private and tailor-made exclusively for you. Choose your preferred activities, whether it be guided hikes, world-class sport fishing, nature drives or stargazing, we will create an itinerary to match your interests. Visit our website for itinerary suggestions or contact us to discuss your dream safari.

**BOOKINGS** 1800 180 085  
[bookings@helispirit.com.au](mailto:bookings@helispirit.com.au)  
 Available from April to September.



## CANCELLATION POLICY

### DAY FLIGHTS/TOURS:

WITHIN 24 HOURS: Non-refundable.  
 25 HOURS TO 7 DAYS: 20% administration fee.

### OVERNIGHT TOURS:

WITHIN 7 DAYS: Non-refundable.  
 8 TO 14 DAYS: 50% deposit retained.  
 15 TO 30 DAYS: 20% deposit retained.

### EXTENDED SAFARIS:

WITHIN 60 DAYS: Non-refundable.  
 61+ DAYS: 20% deposit retained.

Cancellations must be in writing.

We strongly recommend travel insurance. If a tour is cancelled by us, customers receive a full refund.

### PAYMENT CONDITIONS:

Full payment is required to confirm your reservation. Payments can be made via credit card, bank deposit, or cash. Existing accounts are 14-day terms. Please be advised we do not accept AMEX.

### MINIMUM NUMBERS:

A minimum of 2 passengers is required, unless the tour is confirmed to run. Rates for overnight packages are Twin Share. Single Supplement prices are available.

### CHILD/INFANT POLICY:

Infants (0-1 years) travel free on a parent's lap (one infant per aircraft).

Children (2-12 years) must be accompanied by an adult.

### ACCESSIBILITY:

Please advise assistance needs 48 hours before departure. Staff cannot lift passengers.

### CHECK-IN:

Passengers must arrive 30 minutes before departure.

### COMMENTARY:

All scenic flights include personalised commentary in English.

### SEAT WEIGHT LIMIT:

ROBINSON R44 & R66: 136 kg  
 OTHER HELICOPTERS: 150 kg

### PERSONAL ITEMS:

We take care but are not liable for damaged personal items. For lost property, contact the departure office.

### CAMERAS & LUGGAGE:

Cameras/phones must have a wrist strap. Tablets and iPads are not allowed. Soft luggage only (max. 8 kg per person).

### SEASONALITY & RATES:

Opening/closing dates for remote bases may vary. Prices are valid until 31st March 2027, subject to change. Tours paid for in full are protected from price increases.

### TRANSFERS:

Complimentary Kununurra hotel pick-ups are available, 45 minutes before departure. Notify us at booking or by 3pm the day before.

### OTHER INFORMATION:

Prices include all government, environmental, and airport levies. Tours may change due to weather or national park closures. Fuel surcharges may apply due to fuel price increases. Passenger information is required for bookings and retained as per our Privacy Policy.

For full Terms & Conditions, visit [helispirit.com.au](http://helispirit.com.au).

Follow us @helispirit

