

# SCENIC HELICOPTER FLIGHTS 2025

PURNULULU NATIONAL PARK | WARMUN | KATHERINE  
EL QUESTRO | KUNUNURRA | LAKE ARGYLE | MITCHELL FALLS





- Operating since 1984
- Fleet of 25 helicopters
- Ecotourism accredited for over 20 years
- National tourism quality accredited
- Head office based in Kununurra



HeliSpirit acknowledges the Traditional Custodians of the lands where we live, work, and welcome visitors, including the Miriuwung Gajerrong people on whose Country we are based. We pay our respects to Elders, past and present, and recognise their enduring connection to the land, waters, and community.

# ABOUT HELISPIRIT

At HeliSpirit, we're committed to delivering reliable, professional helicopter services across a diverse range of industries. Since our founding in 1984, we've led the way in tourism, pioneering scenic helicopter flights over the iconic Bungle Bungle Range.

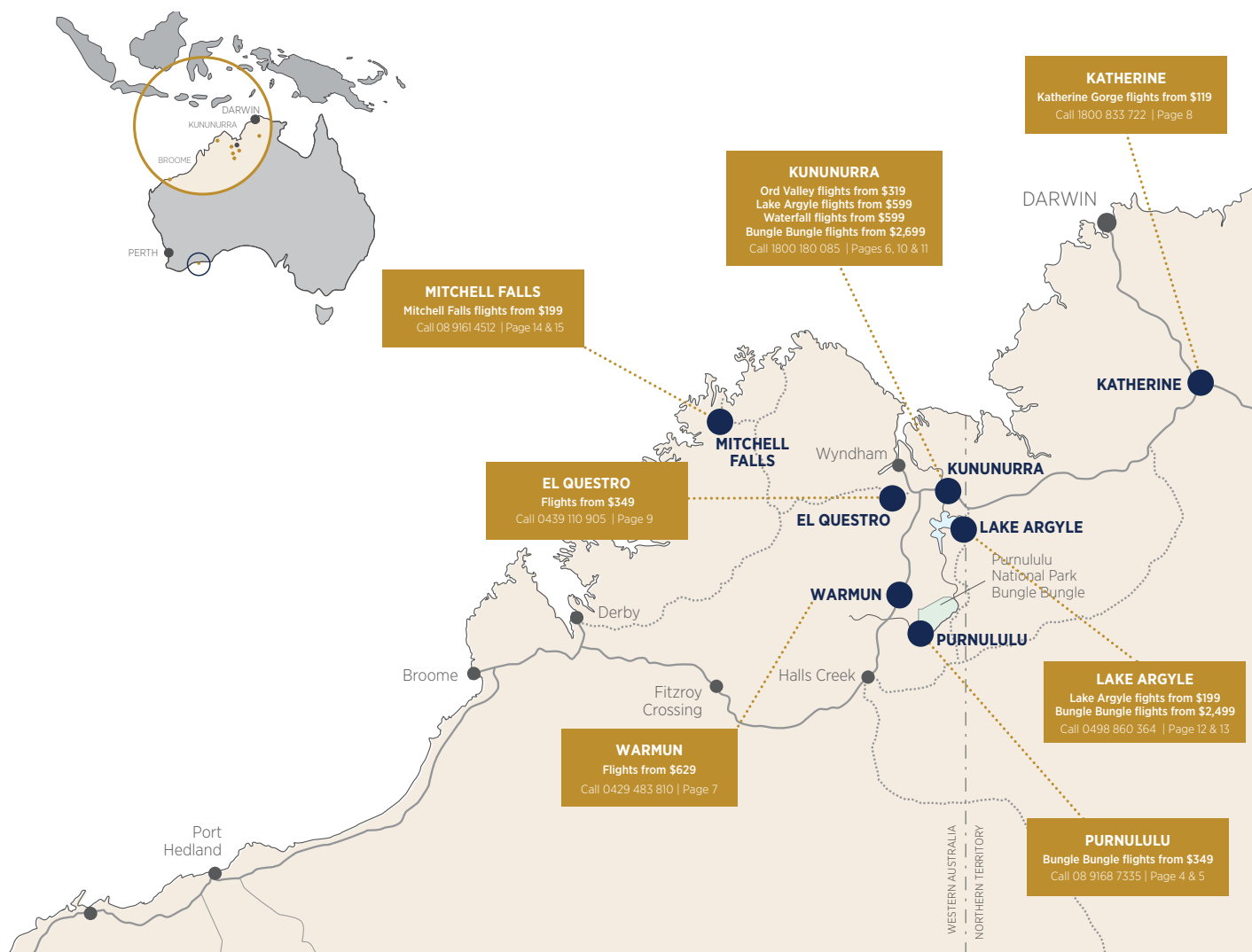
Our head office is based in Kununurra/Goonoonoorrang, a vibrant town of around 5,000 residents located at the heart of Miriwoong Country. Every year, we're privileged to fly tens of thousands of tourists across the region, with peak season running from April to October.

With a range of tourism experiences, we're proud to showcase the spectacular beauty of Australia's north-west from our bases across the Kimberley and Northern Territory.

We operate a fleet of twenty-five helicopters stationed at key locations, including Purnululu National Park (Bungle Bungle), Warmun, El Questro, Katherine, Kununurra, Lake Argyle, and Mitchell Falls.

As a locally owned, multi-award-winning company, HeliSpirit is the specialist in exploring Australia's north by helicopter. We hold National Tourism Quality Accreditation and, in 2022, we were inducted into the Ecotourism Hall of Fame for maintaining eco-accreditation for over 20 years.

**Give our friendly team a call to chat about the region and find the perfect flight for you.**



APRIL TO SEPTEMBER

VH-HNQ

HeliSpirit

BUNGLE BUNGLE RANGE

## PURNULULU NATIONAL PARK THE BUNGLE BUNGLE

Purnululu National Park, a UNESCO World Heritage site, is the first national park in the Kimberley to be jointly managed by the Gija and Jaru Traditional Owners alongside the Parks and Wildlife Service. This joint management system honours the Traditional Owners' responsibility for the care of the land and the well-being of visitors.

As a licensed tour operator within Purnululu, HeliSpirit is committed to upholding and enhancing sustainability principles in the park to ensure that future generations can enjoy this unique landscape. Our operations are designed to enrich visitor experiences while preserving the park's values. Our recognition as a Green Travel leader, with Eco Certification since 2002, reflects our dedication to sustainable tourism.

Together with our passengers, HeliSpirit contributes financially to the management of Purnululu; a portion of each tour price goes directly to the Parks and Wildlife Service to support the preservation of this natural area and improve visitor facilities.



**PURNULULU NATIONAL PARK**  
IS LOCATED ON GIJA & JARU COUNTRY.  
WE ACKNOWLEDGE THESE PEOPLES AS THE  
TRADITIONAL OWNERS OF THE LAND  
WHERE WE LIVE, WORK AND FLY.

## FROM PURNULULU NATIONAL PARK

**BOOKINGS** 08 9168 7335  
bungles@helispirit.com.au

Office and helipad located at Bellburn Airstrip, Purnululu National Park. Seasonal Base Open from April 2025.

### A18 | BUNGLE BUNGLE DOMES SPECIAL

**FLIGHT TIME:** 18 MINUTES | **COST:** \$349 PP

The perfect option for a snapshot of the stunning Bungle Bungle Range. Soar over the mouth of the spectacular Piccaninny Gorge to witness the dramatic Cathedral Gorge and iconic black and orange striped Bungle Bungle domes.

### A30 | BUNGLE BUNGLE DOMES & RED ROCK GORGES FLIGHT

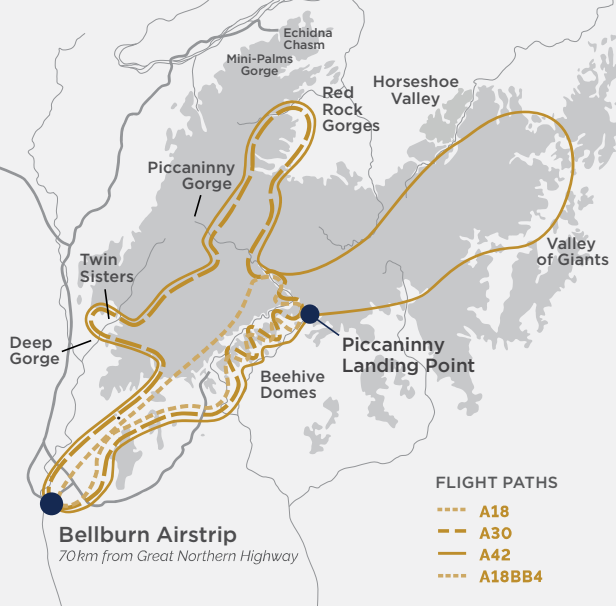
**FLIGHT TIME:** 30 MINUTES | **COST:** \$539 PP

The sandstone massif of the Bungle Bungle Range is almost 75 times the area of Uluru. There are more stunning features and spectacular landforms to see in this 30-minute scenic flight than you could imagine. View the hidden red rock gorges of the north west tip of the Bungle Bungle Range, as well as Piccaninny Gorge from end to end and the unique beehive shaped formations. These stunning and unique geological formations are the hero of Purnululu National Park which is recognised internationally for their natural beauty and is one of only 16 Natural World Heritage listed areas in Australia.

### A42 | THE ULTIMATE BUNGLE BUNGLE FLIGHT

**FLIGHT TIME:** 42 MINUTES | **COST:** \$629 PP

Depart Bellburn Airstrip and head towards the southern tip of the Bungle Bungle Range to view Deep Gorge and "The Twins". Continue to the highest point of the Bungle Bungle Range and view the spectacular Red Rock Gorges of the north-west end of the park. View the eastern side of the range, and encounter incredible eroded sandstone formations and a maze of gorges, soaring over the Valley of the Giants. Fly along the southern face to the mouth of Piccaninny Gorge, and then follow Piccaninny Creek to view and photograph the mouth of Cathedral Gorge and the famous orange and black striped beehive shaped domes.

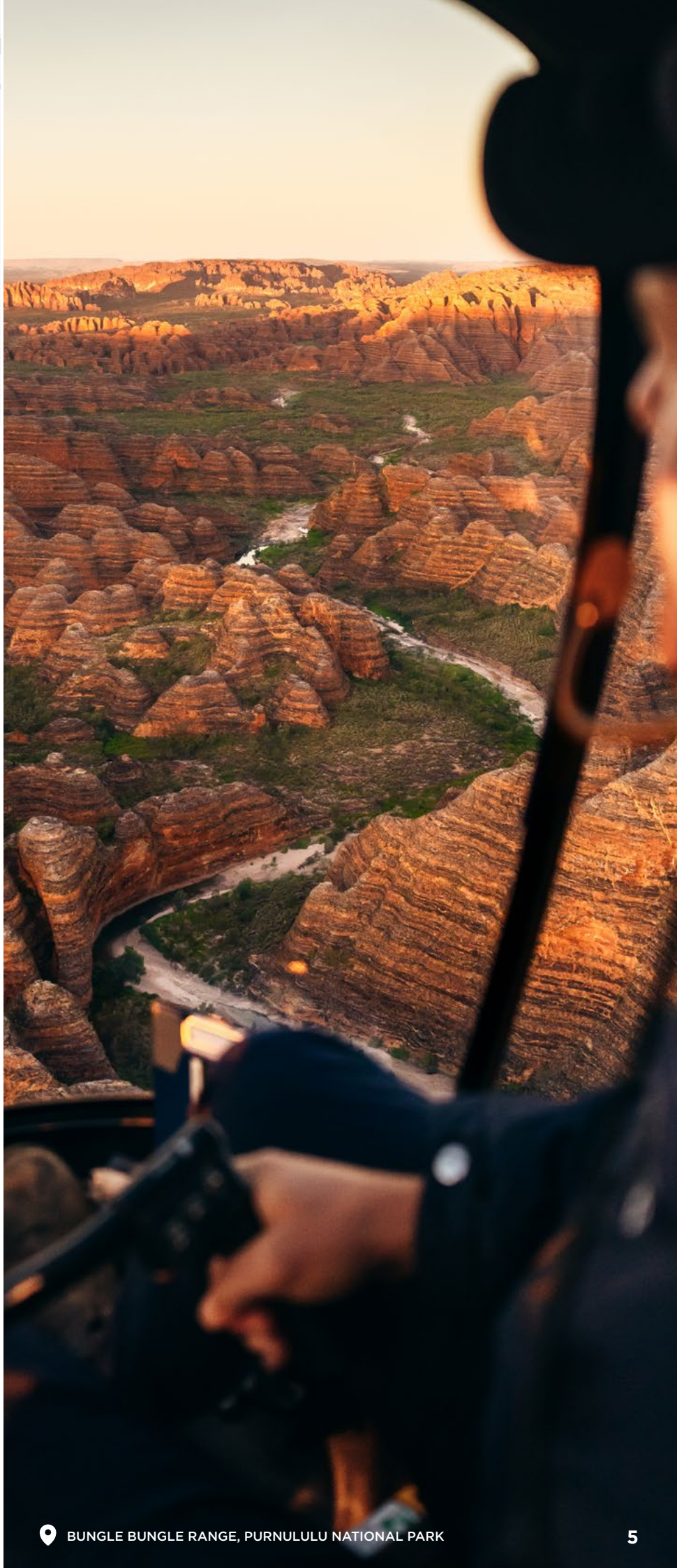


## A18BB4 | BUNGLE BUNGLE DOMES SPECIAL + PICCANINNY GORGE HELI HIKE

**DEPARTS:** BELLBURN AIRSTRIP 7AM  
**AVAILABLE:** MAY TO AUGUST  
**FLIGHT TIME:** 12 MINUTES + 6 MINUTES  
**TOUR DURATION:** 8.5 HOURS  
**COST:** \$1,229 PP

Fly over the south west end of the Bungle Bungle Range to “Y” Gorge before soaring across the top of the enormous massif to the mouth of the spectacular Piccaninny Gorge. Continue along the southern face of the range, following Piccaninny Creek, where you can view the mouth of Cathedral Gorge and soar over the famous orange and black striped sandstone beehive shaped domes. Land near the mouth of Piccaninny Gorge - this enormous gorge spreads into five fingers as it cuts through the Bungle Bungle Range. Your guide will lead the hike into the gorge and explain the cultural significance of the area, as well as the unique history of the area which consequently led to the World Heritage listing of Purnululu National Park.

The hike is up to 10km return and requires a high level of fitness and mobility - the rocky creek bed of Piccaninny Gorge is classed as a level five walk. During April and August, there is little shade on the walk and the temperatures can exceed 40°C.





**BUNGLE BUNGLE RANGE, PURNULULU NATIONAL PARK**

## KUNUNURRA | GOONONORRANG

### **KHBBS | BUNGLE BUNGLE & SECRET SPRINGS FLIGHT + SWIM & PICNIC**

**DEPARTS:** KUNUNURRA  
**FLIGHT TIME:** 3 HOURS  
**TOUR DURATION:** 5 HOURS | **COST:** \$2,699 PP

This scenic helicopter tour features a stunning flight from Kununurra over the Bungle Bungle Range, with spectacular views of the famous Bungle Bungle domes. You will land at Bellburn Airstrip in Purnululu National Park for refreshments, before flying to a secret spring nestled within the Range. Once landed, you will take a short hike into a remote waterhole, where you can swim in absolute privacy and enjoy a picnic in one of the most beautiful settings imaginable. A fair level of mobility is required for the short hike to the waterhole. This tour option is available year-round with spectacular waterfalls to view after the rains in February and March.

### **KHBB1 | BUNGLE BUNGLE FLIGHT + PRIVATE CATHEDRAL GORGE GUIDED WALK**

**AVAILABLE:** JANUARY - SEPTEMBER  
**DEPARTS KUNUNURRA:** AT 6:00AM  
**FLIGHT TIME:** 3 HOURS  
**TOUR DURATION:** 8 HOURS | **COST:** \$3,299 PP

Departing from Kununurra, take an incredible scenic helicopter flight to the Bungle Bungle Range before landing at Bellburn Airport in Purnululu National Park where your guided tour begins. Meet with your own private tour guide and transfer to an air-conditioned 4WD vehicle, to drive closer to the Bungle Bungle Range. Enjoy a moderate 3-kilometre guided walk among the famous eroded towers and black and orange banded beehive sandstone formations on the Domes Walk. Your guide will then take you into Cathedral Gorge, where towering cliffs open up to form a space with awe-inspiring natural acoustics, to enjoy your tasty picnic lunch in spectacular surroundings. Walk along the bed of Piccaninny Creek, which flows only in the monsoon waterfall season.

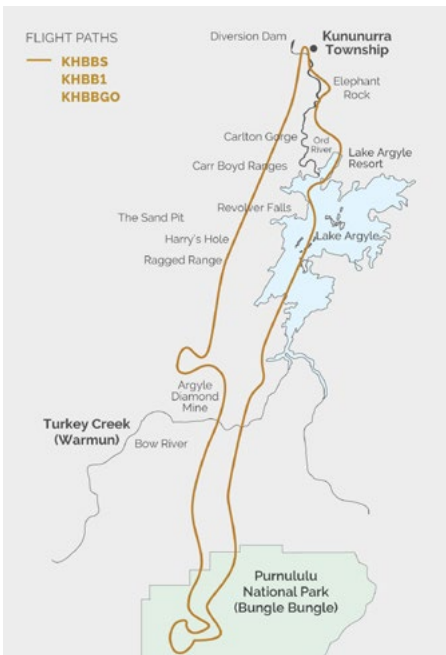
From January to March when the national park is closed to drive-in visitors, we land at the Piccaninny Creek car park to start the guided walk as described above. During these months you will be one of only a handful of people who have entered Purnululu in the waterfall season. The colours are brighter after the rain and the creeks are filled with water. Bring your swimwear, and wear walking shoes that can get wet. A change of clothing is advised for the return flight.

**BOOKINGS** 1800 180 085  
bookings@helispirit.com.au

### **KHBGG0 | BUNGLE BUNGLE FLIGHT, + PRIVATE CATHEDRAL GORGE & ECHIDNA CHASM GUIDED WALK + OVERNIGHT STAY**

**DAY 1 DEPARTS:** KUNUNURRA AT 6:00AM  
**DAY 2 RETURNS:** KUNUNURRA AT 9:00AM  
**FLIGHT TIME:** 3 HOURS  
**TOUR DURATION:** FULL DAY AND OVERNIGHT  
**COST:** ADULT \$3,629 PP | CHILD \$3,529 PP

Available from April to September. Depart Kununurra and fly over the Ord River and Lake Argyle before landing at Bellburn Airstrip in Purnululu National Park. Be transported by air-conditioned 4WD to Piccaninny Creek car park where your guided walk will begin. Enjoy a moderate 3-kilometre guided walk among the famous eroded towers and black and orange banded beehive sandstone formations on the Domes Walk. Your guide will then take you into Cathedral Gorge, where towering cliffs open up to form a space with awe-inspiring natural acoustics. Board the 4WD bus again for an approx. 45-60 minute drive to the northern gorges of Purnululu, which are quite different to Cathedral Gorge and the domes at the south. A tasty picnic lunch will be provided to keep you fueled for your explorations. After lunch, follow your tour guide on a 1.5-hour return walk into the incredible Echidna Chasm. A rocky path forms your way into Echidna Chasm, which narrows at points to less than 2-metres in width. After your day of exploring, enjoy your overnight stay at the Bungle Bungle Savannah Lodge in a private ensuite cabin. Enjoy sunset drinks from their lookout or take a dip in the pool. Your stay includes dinner and breakfast. The following morning, return to Kununurra via another stunning scenic helicopter flight.







BUNGLE BUNGLE RANGE

## FROM WARMUN

Depart from Warmun Roadhouse on the Great Northern Highway.

**BOOKINGS** 0429 483 810  
warmun@helispirit.com.au

Seasonal Base open from April 2025

### W45 | BUNGLE BUNGLE & OSMAND RANGE FLIGHT

**FLIGHT TIME:** 45 MINUTES | **COST:** \$629 PP

This Bungle Bungle helicopter flight takes in the Red Rock Gorges of the Northern Massif, the Western Wall, Picaninny Gorge and Creek, Deep Gorge and 'Y'Gorge. The Osmand Range is one of the Kimberley's lesser known spectacular ranges, filled with palms clinging to gorges, waterholes deep in crevasses and endless waves of ancient rocks rolling towards the east.

### W45BB1 | BUNGLE BUNGLE HELICOPTER FLIGHT + CATHEDRAL GORGE GUIDED WALK

**DURATION:** 9:30AM TO 4:00PM (6:30AM TO 1:00PM IN SEPTEMBER)

**FLIGHT TIME:** 45 MINUTES

**COST:** ADULT \$1619 PP | CHILD \$1,439 PP

**+ UPGRADE YOUR TOUR WITH AN OVERNIGHT STAY IN PURNULULU**

**COST:** ADULT \$2,019 PP | CHILD \$1,739 PP

This scenic helicopter flight offers breathtaking views of the Bungle Bungle Range, including the Northern Massif, Western Wall, and Picaninny Gorge. After landing in Purnululu National Park, transfer to a 4WD for a short drive to the beehive formations. Enjoy a guided 3km walk along the Domes Walk, taking in the striking black and orange domes. Visit Cathedral Gorge, famous for its natural acoustics and enjoy a picnic lunch. Walk back along Picaninny Creek before returning to Warmun by helicopter.

### W45BB3 | BUNGLE BUNGLE HELICOPTER FLIGHT + CATHEDRAL GORGE, DOMES & ECHIDNA CHASM GUIDED WALK

**DURATION:** 6:30AM TO 4:00PM

**FLIGHT TIME:** 45 MINUTES

**COST:** ADULT \$1,719 PP | CHILD \$1,489 PP

**+ UPGRADE YOUR TOUR WITH AN OVERNIGHT STAY IN PURNULULU**

**COST:** ADULT \$2,119 PP | CHILD \$1,789 PP

Truly appreciate the beauty of Purnululu National Park by experiencing both the northern and southern ends. Discover the iconic striped domes and Cathedral Gorge as well as the towering red rock gorges filled with Livistona palms. Both walks are moderate and require walking over loose stones and uneven ground. Includes morning tea, lunch, afternoon tea and water.

**This 1.5-hour walk requires a good level of mobility due to challenging terrain.**

### W45BB4 | BUNGLE BUNGLE HELICOPTER FLIGHT + PICCANINNY GORGE HELI HIKE

**AVAILABILITY:** MAY - AUGUST

**DURATION:** 6:30AM - 4:00PM

**FLIGHT TIME:** 45 MINUTES | **COST:** \$2,149


Explore the best of Purnululu with this fly + hike experience. Witness the beauty of the Bungle Bungle Range before landing near the mouth of Picaninny Gorge. Your guide will lead the hike into the gorge and share stories of the area's significance to the Aboriginal people and its unique history, which led to the World Heritage listing of Purnululu National Park. This 10km return hike is classed as a level 6 walk and requires a high level of fitness and mobility. Picnic lunch and morning/afternoon tea included.









  
 WE PAY OUR RESPECTS TO THE JAWOYN,  
 DAGOMAN AND WARDAMAN PEOPLES,  
 THE TRADITIONAL CUSTODIANS OF THE  
 LAND IN AND AROUND KATHERINE.

NITMILUK (KATHERINE GORGE)

# FROM KATHERINE

**BOOKINGS** 1800 833 722  
katherine.gorge@helispirit.com.au

Depart from Maud Creek airfield  
on Gorge Road

## KG8 | KATHERINE GORGE SPECIAL

**FLIGHT TIME:** 8 MINUTES | **COST:** \$119 PP

This flight gives you a snapshot of the dramatic Katherine Gorge. The flight path takes you to the Northern Rockhole and over the mouth of the gorge.

## KG12 | KATHERINE GORGE, BUTTERFLY GORGE & LILY PONDS

**FLIGHT TIME:** 12 MINUTES | **COST:** \$189 PP

Discover the beauty of Nitmiluk National Park from above as you fly along the stretch of canyons that make up the stunning Katherine Gorge. The perfect way to get a glimpse of the magical Top End scenery.

## KG15 | KATHERINE GORGE HIGHLIGHTS

**FLIGHT TIME:** 15 MINUTES | **COST:** \$229 PP

This 15-minute stunning scenic flight offers marvelous views of the eight amazing gorges of Nitmiluk National Park. Fly over the sheer canyon walls of the escarpment area and enjoy panoramic views of the Top End's unique wild scenery.

## KG20 | THE FULL KATHERINE GORGE EXPERIENCE

**FLIGHT TIME:** 20 MINUTES | **COST:** \$299 PP

Enjoy the magnificence of all 13 gorges in Nitmiluk National Park in this breathtaking 20-minute scenic flight. Fly low over the Katherine River for a thrilling view of the Arnhem Land escarpment and surrounding scenery.

## KG30 | KATHERINE GORGE & 17 MILE VALLEY WATERFALLS

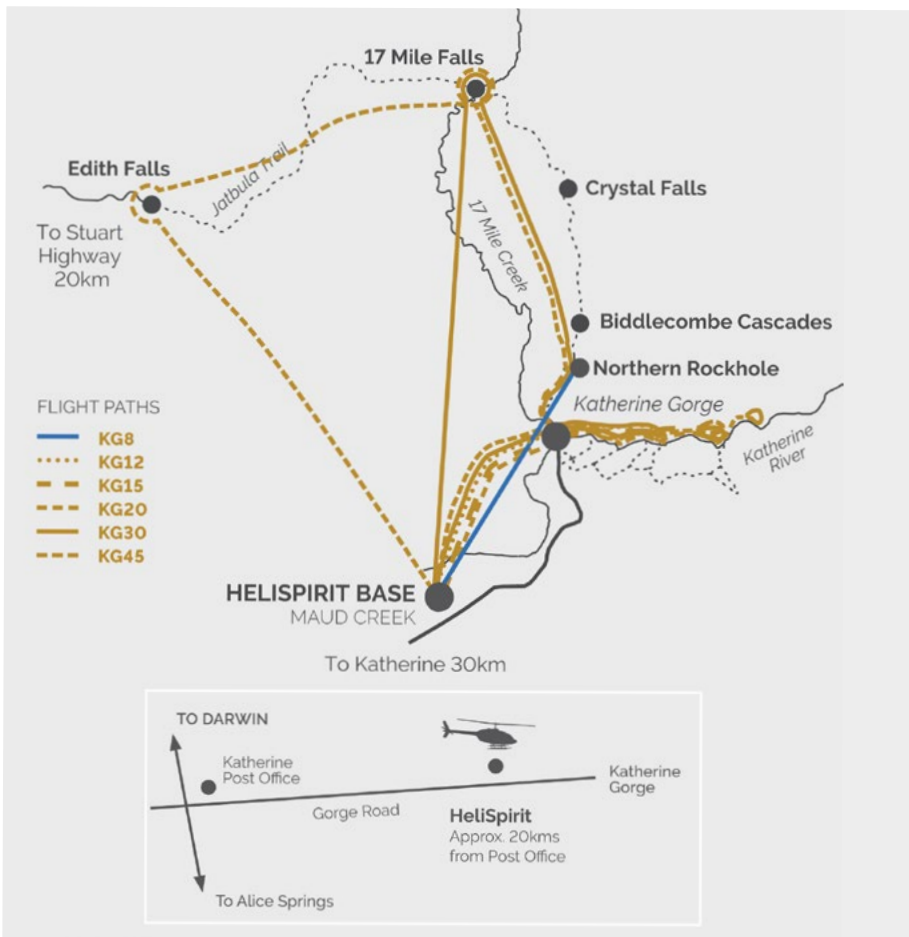
**FLIGHT TIME:** 30 MINUTES | **COST:** \$449 PP

Experience the natural beauty of Katherine Gorge in Nitmiluk National Park before flying further along the escarpment towards Arnhem Land. Enjoy panoramic views of Northern Rockhole, Biddlecombe Cascades, Crystal Falls and 17 Mile Falls.

## KG45 | ULTIMATE NITMILUK EXPERIENCE - KATHERINE GORGE & WATERFALLS

**FLIGHT TIME:** 45 MINUTES | **COST:** \$649 PP

This 45-minute flight allows you to experience the full diversity of Nitmiluk National Park. Discover spectacular waterfalls, including Edith Falls and Northern Rockhole, within Seventeen Mile Valley and enjoy thrilling and complete views of Katherine Gorge.





LOST CITY



WE ACKNOWLEDGE THE NGARINYIN PEOPLE, THE TRADITIONAL CUSTODIANS OF THE COUNTRY ON WHICH WE OPERATE. WE PAY OUR RESPECTS TO THEIR ELDERS, PAST PRESENT AND EMERGING.

# FROM EL QUESTRO

**BOOKINGS** 0439 110 905  
elquestro@helispirit.com.au

## EL1 | AMAROO FALLS HELICOPTER ADVENTURE

**FLIGHT TIME:** 30 MINUTES  
**TOUR DURATION:** 3 HOURS | **COST:** \$799 PP

Only accessible by helicopter, this stunning wonderland features 15 cascading waterfalls, ranging from knee-high to falls as high as 45 metres. It also boasts several pristine swimming holes and some of the most breathtaking views that El Questro has to offer. A picnic is included.

## EL2 | MIRI MIRI FALLS BY HELICOPTER

**FLIGHT TIME:** 24 MINUTES  
**TOUR DURATION:** 2 HOURS | **COST:** \$649 PP

Tucked away in a remote corner of El Questro, Miri Miri Falls features spring-fed water cascading over a 50-metre drop into a deep pool, surrounded by Livistona palms and Paperbark trees. Enjoy a refreshing dip and picnic in one of El Questro's most secluded spots.

## EL3 | THE LOST CITY HELI-TOUR

**FLIGHT TIME:** 18 MINUTES  
**TOUR DURATION:** 2 HOURS | **COST:** \$549 PP

Explore ancient cave formations and unique terrain on a fully guided tour of the Lost City. Recommended for the fit and adventurous, this thrilling helicopter flight includes scaling crevices, crawling through openings, and navigating the dark interior of caves.

## EL4 | THE LOST CITY & MIRI MIRI HELI-TOUR

**FLIGHT TIME:** 30 MINUTES  
**TOUR DURATION:** 4 HOURS | **COST:** \$979 PP

Combine two adventurous heli-tours for an unforgettable day. Explore the Lost City, then cool off at the pristine Miri Miri Falls and enjoy a picnic lunch.

## EL6 | COCKBURN RANGE SUNSET FLIGHT

**FLIGHT TIME:** 30 MINUTES  
**TOUR DURATION:** 2 HOURS | **COST:** \$699 PP  
**+ EL6P ADD A PICNIC FOR \$50 PP**

Experience a unique Kimberley sunset on a scenic helicopter flight along the Pentecost River. Take in breathtaking views of El Questro and the stunning Cockburn Ranges. Please note the availability of this tour is subject to appropriate daylight conditions.

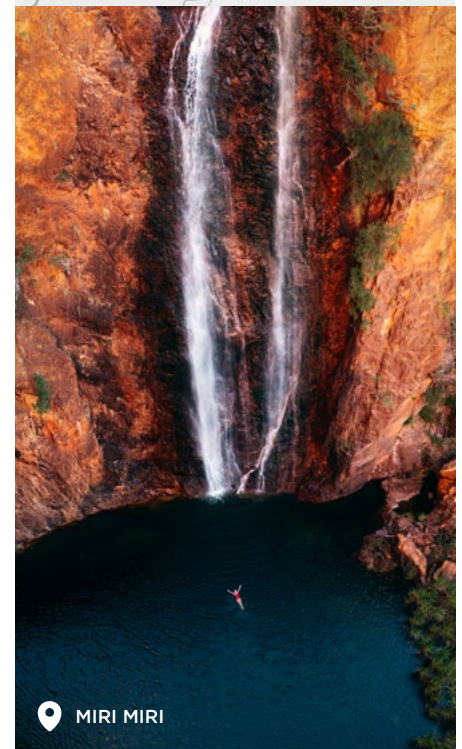
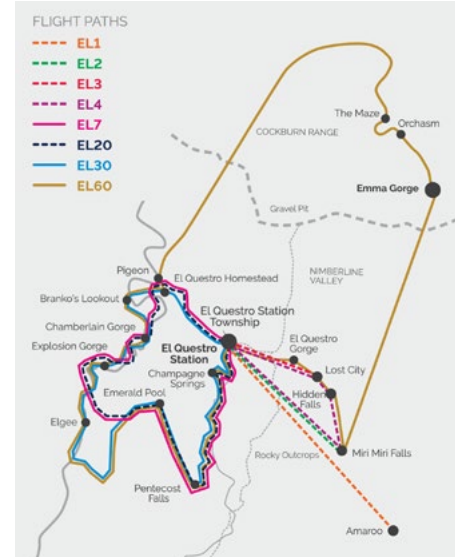
## EL7 | CHAMPAGNE BREAKFAST AT CHAMPAGNE SPRINGS

**FLIGHT TIME:** 24 MINUTES  
**TOUR DURATION:** 2 HOURS | **COST:** \$599 PP

Experience the serenity of Champagne Springs on this morning adventure. Land at a spring-fed waterhole for a swim and picnic breakfast, surrounded by lush scenery and cascading waterfalls. Fly back over the stunning Pentecost River and Chamberlain Gorge. This tour can also be booked as a transfer for the 4.8km hike to Champagne Springs.

## EL7PU/DO | CHAMPAGNE SPRINGS ONE-WAY TRANSFER

**FLIGHT TIME:** 6 MINUTES | **COST:** \$449 PP



MIRI MIRI

### SCENIC HELICOPTER FLIGHT

CHOOSE FROM A 20, 30 OR 60 MINUTE SCENIC HELICOPTER FLIGHT OVER THE GRAND LANDSCAPE OF EL QUESTRO.

**EL20 20 MIN FLIGHT COST: \$349 PP**  
**EL30 30 MIN FLIGHT COST: \$539 PP**  
**EL60 60 MIN FLIGHT COST: \$999 PP**



ORD RIVER, KUNUNURRA

# FROM KUNUNURRA

**BOOKINGS** 1800 180 085  
bookings@helispirit.com.au

## KH18 | KUNUNURRA SNAPSHOT

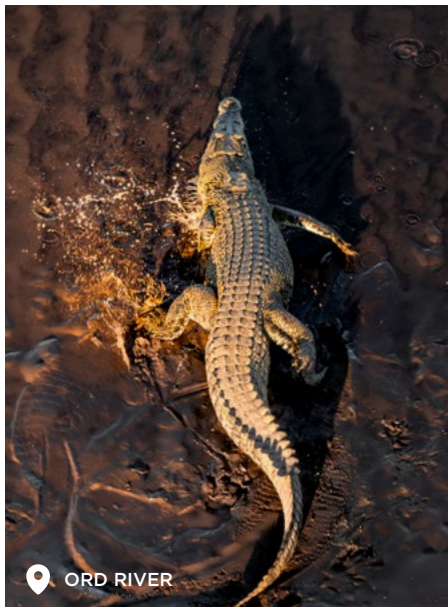
**FLIGHT TIME:** 18 MINUTES | **COST:** \$319 PP

Discover Kununurra from above on an 18-minute helicopter flight. Soar over the Ord River, Diversion Dam, Ivanhoe Crossing, Mirima National Park's mini Bungle Bungle, and Lily Lagoon Wetlands for breathtaking views of the Kimberley's stunning landscapes.

## KH30C | CROC SPOTTING HELICOPTER FLIGHT

**FLIGHT TIME:** 30 MINUTES | **COST:** \$419 PP

Soar by helicopter over the Lower Ord River to spot sunbathing saltwater crocodiles along the banks. Enjoy unique aerial views of Diversion Dam, Ivanhoe Crossing, and the Ord Irrigation Area as morning light warms the land.



ORD RIVER

## KH45 | ORD RIVER VALLEY & LAKE ARGYLE FLIGHT

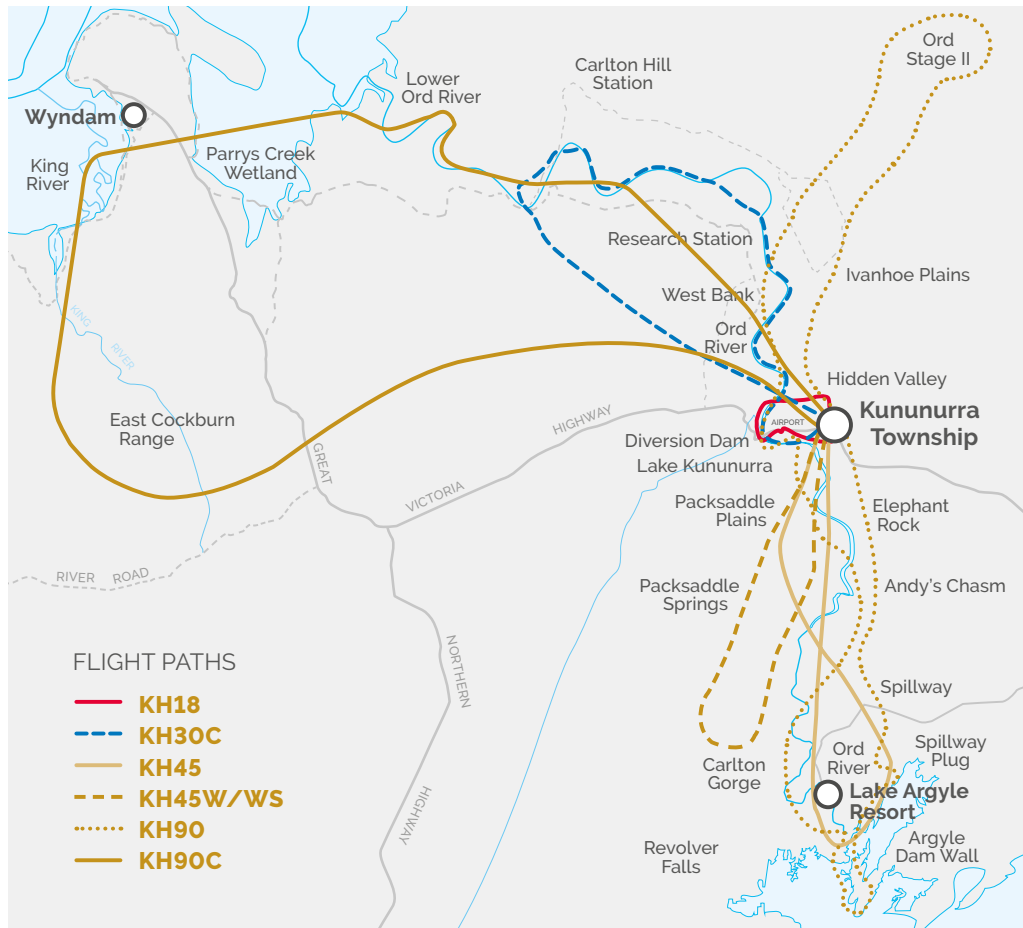
**FLIGHT TIME:** 45 MINUTES | **COST:** \$599 PP

Fly by helicopter over the Ord River, passing Elephant Rock, Carlton Gorge, and Packsaddle Plains, then trace the river to Lake Argyle for views of the dam wall, resort, and stunning lake reflections. Enjoy Kununurra's tropical farms, majestic ranges, and breathtaking gorges from above.

## KH90 | DISCOVER THE ORD IRRIGATION SCHEME

**FLIGHT TIME:** 90 MINUTES | **COST:** \$1,199 PP

This 90-minute helicopter flight showcases breathtaking sights, including Ord Stage I and II, Spillway Creek, Carlton Gorge, Packsaddle Plains, Kununurra township, the mini Bungle Bungle in Mirima National Park, and Lake Argyle. Fly over farmlands, the Ord Hydro Power Station, and the expansive Lake Argyle before returning to Kununurra.





GOONDONDORRANG (KUNUNURRA) IS LOCATED ON MERTWOONG COUNTRY. WE PAY OUR RESPECTS TO THE MERTWOONG GAJERRONG PEOPLES AS THE TRADITIONAL OWNERS OF THE LAND WHERE WE LIVE, WORK AND FLY.

### **KH45W** | WATERFALL SCENIC FLIGHT **KH45WS** | WATERFALL HELI ADVENTURE + SWIM

**FLIGHT TIME:** 45 MINUTES **COST:** \$599 PP  
+ REMOTE LANDING FOR A SWIM

This scenic flight aims to give you the best views of the waterfalls surrounding Kununurra. The flight path we follow on the day of your flight will vary depending on which waterfalls are at their best. Our experienced pilots will give you exciting views of the mountain ranges surrounding Kununurra, the huge Ord River, the surrounding tracts of irrigated farmland and the town of Kununurra. You can choose to land at a remote waterfall to enjoy a refreshing dip and BYO picnic. Please wear walking shoes for this tour.

### **KH90C** | CAPTURE THE COCKBURN RANGE & KING RIVER

**FLIGHT TIME:** 90 MINUTES | **COST:** \$1,199 PP

A photographer's dream. Experience the colours of the Cockburn Range and the mesmerising tidal patterns of King River on this exciting helicopter adventure. Begin your scenic journey flying low over the Lower Ord River keeping an eye out for some crocodiles! Track towards Wyndham, past iconic landscapes made famous by the Baz Luhrmann film 'Australia' and take in the natural aerial art of the tidal river systems below. Continue towards the Cockburn Range and depending on the time of day, be amazed at the vivid colours of the East Kimberley afternoon sun that wash over the rugged terrain.

### **KHPUB** | THE ULTIMATE KIMBERLEY HELI PUB EXPERIENCE

**TOUR DURATION:** 9:00AM TO 4:10PM  
**COST:** \$1,499 PP EXCLUDES SUN

Visit some of the most iconic places in the East Kimberley, on a heli pub experience from Kununurra. The first stop is Lake Argyle Resort for a swim in the famous infinity pool, a beverage and snack, then fly alongside the breathtaking Cockburn Range before landing at El Questro Station for lunch, a drink and some down time at The Swinging Arm Bar. The final stop for the afternoon is the Hoochery Distillery, Western Australia's oldest continuously operating (legal) still. Here you'll enjoy a tour, rum tasting and snack paddle before returning with a scenic flight over Kununurra as the sun makes its way to the horizon, lighting up the spectacular Ord River. Available from May to September.



KING RIVER



REVOLVER FALLS





## LAKE ARGYLE

## FROM LAKE ARGYLE

### LA12 | LAKE ARGYLE SNAPSHOT

**FLIGHT TIME:** 12 MINUTES | **COST:** \$199 PP

Be amazed at the great expanse of Lake Argyle on this exciting scenic flight. Take in stunning views of the Ord Top Dam Wall and the Ord Hydro Power Station that can only truly be appreciated from above.

### LA24 | LAKE ARGYLE SCENIC FLIGHT

**FLIGHT TIME:** 24 MINUTES | **COST:** \$399 PP

This 24-minute scenic flight allows you to view the massive Lake Argyle, Ord Top Dam Wall and Ord Hydro Power Station before flying over the surrounding Carr Boyd Range.

### LA30P | LAKE ARGYLE SECRET WATERHOLE + SWIM

### LA30I | LAKE ARGYLE ISLAND + SWIM

**FLIGHT TIME:** 30 MINUTES | **COST:** \$599 PP  
**TOUR DURATION:** 2 HOURS

Take to the sky and witness the serene views of Ord Top Dam Wall, Ord Hydro Power Station and Lake Argyle from above. You can choose to land at a secluded island or secret waterhole for a picnic lunch and swim.

### LA48 | LAKE ARGYLE & RAGGED RANGE

**FLIGHT TIME:** 48 MINUTES | **COST:** \$749 PP  
+ ADD REMOTE LANDING WITH A PICNIC  
**COST:** \$849 PP **TOUR DURATION:** 2 HOURS

Experience a spectacular 48-minute helicopter flight over Lake Argyle, the Top Dam Wall, and Hydro Power Station. Soar along the western shoreline, over the rugged Carr Boyd Range, and through Kangaroo Creek Gorge. Discover the dramatic Ragged

Range, with its striking chasms and Livistona palms, before returning to Lake Argyle.

Add a picnic stop at a secluded location for a unique experience. Walking shoes are recommended.

### LAORD | HELI RUM TOUR TO THE HOOCHERY DISTILLERY

**FLIGHT TIME:** 48 MINUTES | **COST:** \$849 PP  
**TOUR DURATION:** 2 HOURS  
**DEPARTS:** 1:20PM ON DEMAND  
MON-SAT (EXCLUDES SUN)  
**DEPARTURE TIME:** 1:20PM

A farm to table experience with a twist. Fly over Lake Argyle, Packsaddle Plains, and the irrigation channel while learning about the region's agricultural history and water supply. See local farms before landing at the Hoochery Distillery for a tour and rum tasting. The return flight offers views of Kununurra, Elephant Rock, and the Ord River.

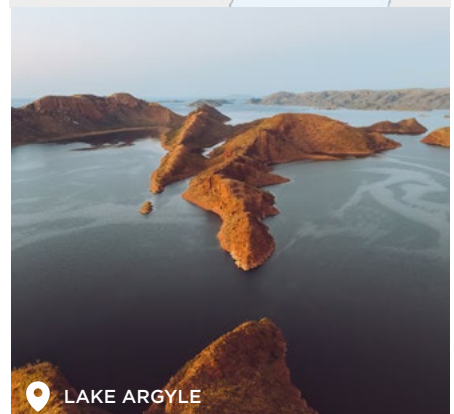
### LAPUB | THE ULTIMATE KIMBERLEY HELI PUB EXPERIENCE

**TOUR DURATION:** 7 HOURS 10 MINUTES  
**COST:** \$1,499 PP  
**DEPARTS:** 10:30AM ON DEMAND  
MON-SAT (EXCLUDES SUN)

Soar alongside the stunning Cockburn Range to El Questro Station for lunch and drinks, then visit the Hoochery Distillery for a tour and rum tasting. Return with a scenic flight over Kununurra, enjoying the sunset over the Ord River.

**BOOKINGS** 0498 860 364  
lake.argyle@helispirit.com.au

All flights begin with an exciting lift off over the cliff adjacent to the infinity pool at Lake Argyle Resort.



## LAKE ARGYLE



## PUNAMII-UUNPUU

(MITCHELL FALLS) IS LOCATED ON WUNAMBAL GAAMBERA COUNTRY. WE ACKNOWLEDGE THESE PEOPLES AS THE TRADITIONAL OWNERS OF THE LAND WHERE WE LIVE, WORK AND FLY.







PUNAMII-UUNPUU (MITCHELL FALLS)

## FROM PUNAMII-UUNPUU MITCHELL FALLS

**BOOKINGS** 08 9161 4512  
mitchell.falls@helispirit.com.au

Flights depart from Mitchell Falls Campground or the top of the falls. Bookings essential.

### MF6 | MITCHELL FALLS HELICOPTER TRANSFER

**FLIGHT TIME:** 6 MINUTES (ONE WAY) | **COST:** \$199 PP

For the ultimate visit to Punamii-Uunpuu, take a transfer flight from the campground to the falls, or do it in reverse (from the falls to the campground). The transfer flight includes a short six minute scenic flight over the majestic Mitchell Falls and Mertens Gorge, giving stunning aerial views of the sites you are about to or have already explored on foot. After visiting these incredible falls, you can either walk back the opposite direction, or opt to take an additional helicopter transfer.

### MF18 | MITCHELL FALLS TRIPLE WATERFALLS

**FLIGHT TIME:** 18 MINUTES  
**COST:** \$349 PP / 4 PPL | \$399 PP / 3PPL | \$499 PP / 2 PPL

This flight takes you downstream along the Mitchell River where freshwater meets saltwater. Orbit the lower waterfalls before heading back to Punamii-Uunpuu via the Western Gorge where you will circuit even more stunning waterfalls. This flight can transfer you from the top of the falls to the campground or vice versa.

### MF48 | MITCHELL FALLS COASTAL EXPERIENCE

**FLIGHT TIME:** 48 MINUTES  
**COST:** \$699 PP / 4 PPL | \$799 PP / 3PPL | \$1,049 PP / 2 PPL

Discover the beauty of the Kimberley coastline on this incredible scenic adventure. Soar over the Mitchell Plateau to the turquoise-coloured waters of the Admiralty Gulf before following the coast line from Walsh Point to Crystal Head.

Take in the stunning views of this untouched landscape as you fly over Crystal Creek to Walmsley Bay before making your way upstream to the majestic three-tiered Punamii-Uunpuu (Mitchell Falls) and Mertens Gorge.

This flight is available as a transfer from the top of the falls to the campground or vice versa.



LAWLEY RIVER, ADMIRALTY GULF



APRIL TO SEPTEMBER



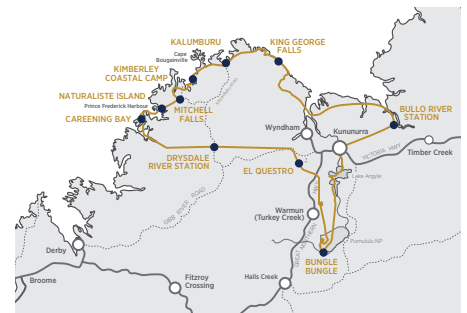
LAKE ARGYLE

# OUTBACK HELISAFARIS

The ultimate way to explore the Kimberley is by private helicopter with an experienced local pilot/guide. Stay in the region's finest remote lodges and coastal wilderness retreats, where the dining is fresh and exquisite, and the service is friendly and welcoming.

HeliSpirit's Outback HeliSafaris operate from April through to September and do not have set departure dates. Our exclusive safaris are private and tailor-made exclusively for you. Choose your preferred activities, whether it be guided hikes, world-class sport fishing, nature drives or stargazing, we will create an itinerary to match your interests. Visit our website for itinerary suggestions or contact us to discuss your dream safari.

**BOOKINGS** 1800 180 085  
bookings@helispirit.com.au



## CUSTOMISE YOUR OWN TOUR

Haven't quite found what you are looking for? We also offer customised helicopter flights and tour packages. Contact us for ideas and inspiration.

## CANCELLATION POLICY:

### DAY FLIGHTS/TOURS:

WITHIN 24 HOURS: Non-refundable  
25 HOURS TO 7 DAYS: 20% administration fee

### OVERNIGHT TOURS:

WITHIN 7 DAYS: Non-refundable  
8 TO 14 DAYS: 50% deposit retained  
15 TO 30 DAYS: 20% deposit retained

### EXTENDED SAFARIS:

WITHIN 60 DAYS: Non-refundable  
61+ DAYS: 20% deposit retained

Cancellations must be in writing.

We strongly recommend travel insurance. If a tour is cancelled by us, customers receive a full refund.

### PAYMENT CONDITIONS:

Full payment is required to confirm your reservation. Payments can be made via credit card, bank deposit, or cash. Existing accounts are 14-day terms. Please be advised we do not accept AMEX.

### MINIMUM NUMBERS:

A minimum of 2 passengers is required, unless the tour is confirmed to run. Rates for overnight packages are Twin Share. Single Supplement prices are available.

### CHILD/INFANT POLICY:

Infants (0-1 years) travel free on a parent's lap (one infant per aircraft).

Children (2-12 years) must be accompanied by an adult.

### ACCESSIBILITY:

Please advise assistance needs 48 hours before departure. Staff cannot lift passengers.

### CHECK-IN:

Passengers must arrive 30 minutes before departure.

### COMMENTARY:

All scenic flights include personalised commentary in English.

### SEAT WEIGHT LIMIT:

ROBINSON R44 & R66: 136kg  
OTHER HELICOPTERS: 150kg

### PERSONAL ITEMS:

We take care but are not liable for damaged personal items. For lost property, contact the departure office.

### CAMERAS & LUGGAGE:

Cameras/phones must have a wrist strap. Tablets and iPads are not allowed. Soft luggage only (max. 8kg per person).

### SEASONALITY & RATES:

Opening/closing dates for remote bases may vary. Prices are valid until 31st March 2026, subject to change. Tours paid for in full are protected from price increases.

### TRANSFERS:

Complimentary Kununurra hotel pick-ups are available, 45 minutes before departure. Notify us at booking or by 3pm the day before.

### OTHER INFORMATION:

Prices include all government, environmental, and airport levies. Tours may change due to weather or national park closures. Fuel surcharges may apply due to fuel price increases. Passenger information is required for bookings and retained as per our Privacy Policy.

For full Terms & Conditions, visit [helispirit.com.au](http://helispirit.com.au).

Follow us @helispirit

